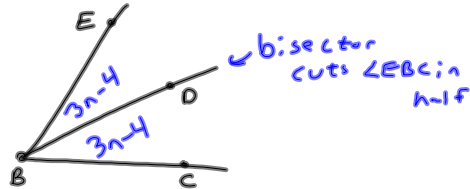


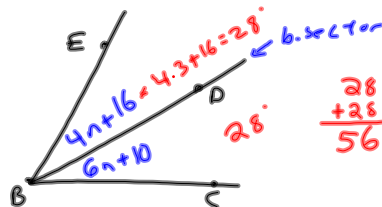
9-16-13  
1st Geo

Ch. 1 Practice Test 1

21. If  $\angle EBC = 6n - 8$ ,  
what is  $\angle EBD$ ?  $3n - 4$

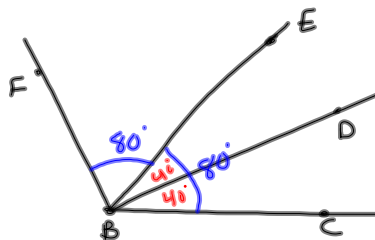


22. If  $\angle EBD = 4n + 16$  and  
 $\angle DBC = 6n + 10$ , what is the  
numerical value of  $\angle EBC$ ?  $56$



$$\begin{aligned} 6n + 10 &= 4n + 16 \\ -4n &\quad -4n \\ \hline 2n + 10 &= 16 \\ -10 &\quad -10 \\ \hline 2n &= 6 \\ \underline{2} &\quad \underline{2} \\ n &= 3 \end{aligned}$$

23. If  $\angle FBE = 80^\circ$ , what  
is  $\angle EBD$ ?  $40^\circ$

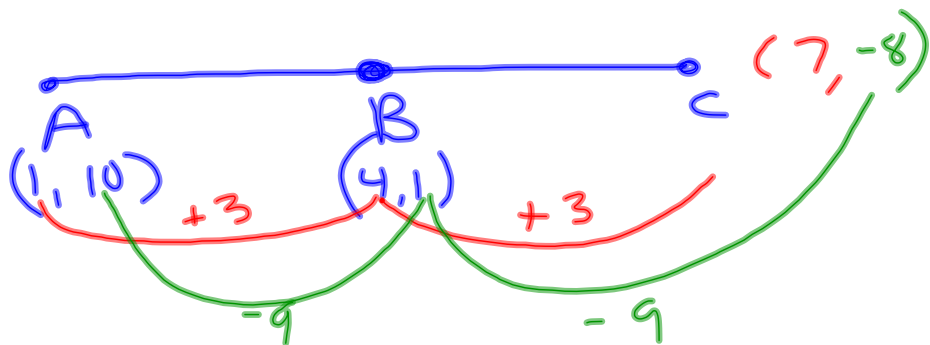


$$(27) A = (\underline{7}, \underline{15}) \quad B = (\underline{5}, \underline{10})$$

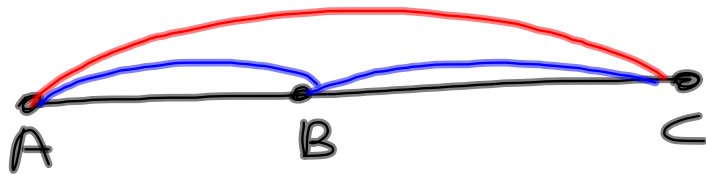
What is  $AB$ ?

$$\begin{aligned} \text{Distance} &= \sqrt{\Delta x^2 + \Delta y^2} \\ &= \sqrt{2^2 + 5^2} \\ &= \sqrt{4 + 25} \\ &= \sqrt{29} \\ &\approx 5.4 \end{aligned}$$

(25) Point A is at  $(1, 10)$   
and B is at  $(4, 1)$ . If  
B is the midpoint of  $\overline{AC}$ ,  
what are the coordinates  
of C?



B is between A and C



$$AB + BC = AC$$