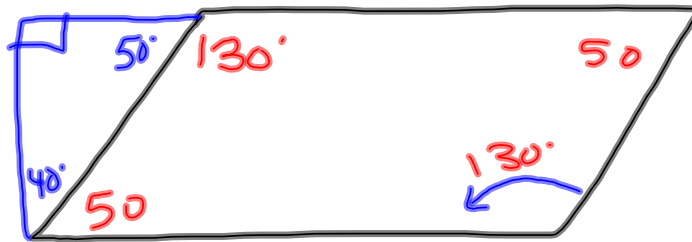


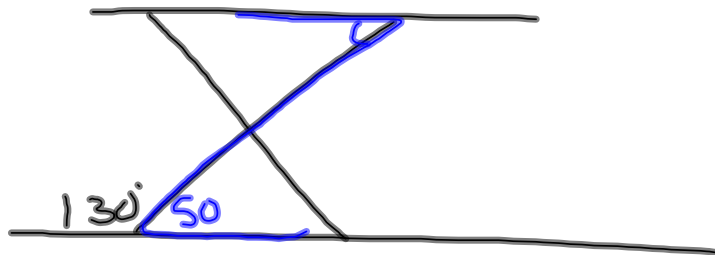
5-5-14
1st Geo

SOL 2007

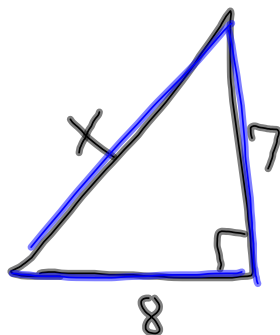
(24)



(5)



(21)



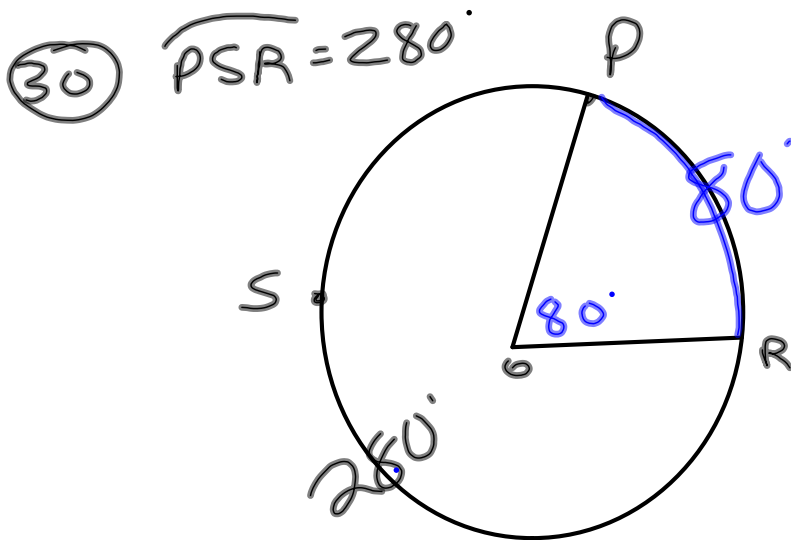
$$8^2 + 7^2 = x^2$$

$$64 + 49 = x^2$$

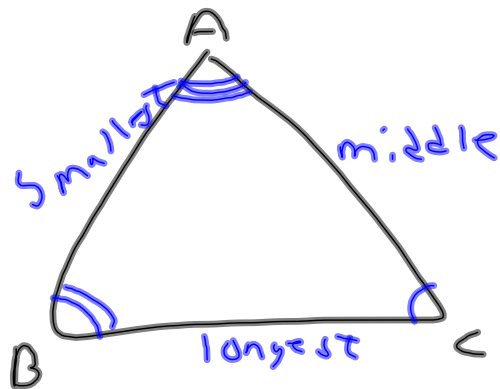
$$\sqrt{113} = \sqrt{x^2}$$

$$x \approx 10.6$$

- 18) a.) $\underline{6, 3}, 9$ 3 9
- b.) $\underline{3, 4}, 5$ 1 7
- c.) $\underline{4, 6}, 8$ 2 10
- d.) $\underline{5, 2}, 4$ 3 7



20) $m\angle C < m\angle B < m\angle A$



$AB < AC < BC$