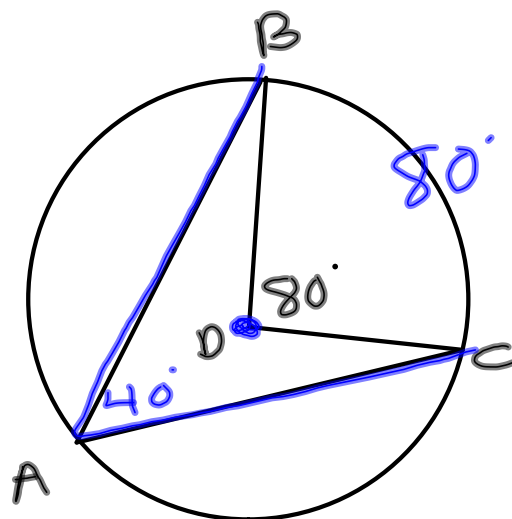
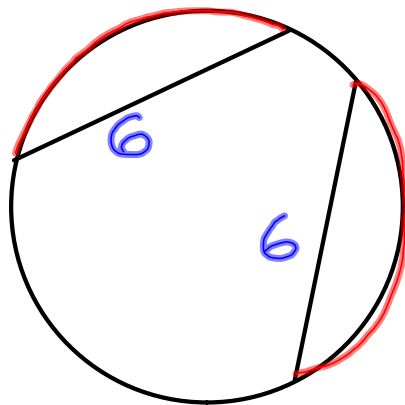
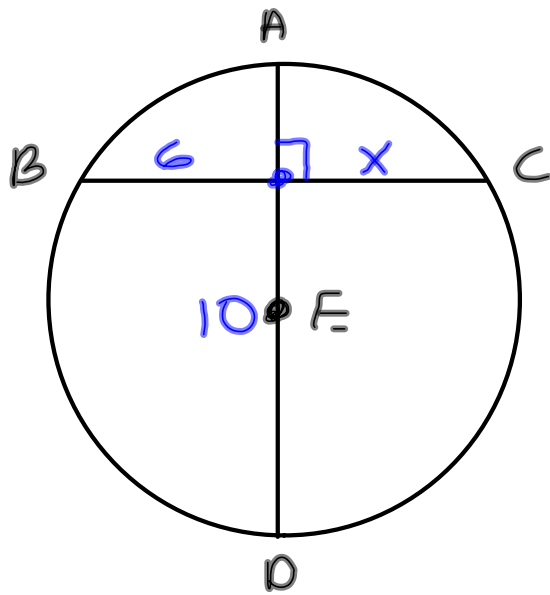
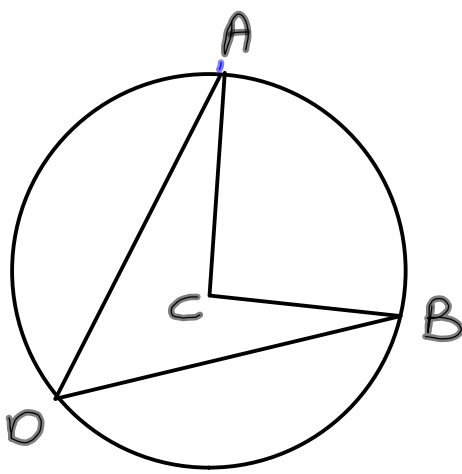
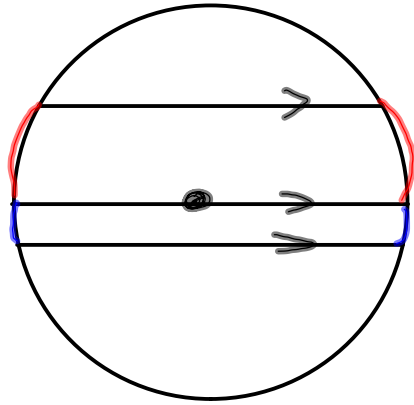


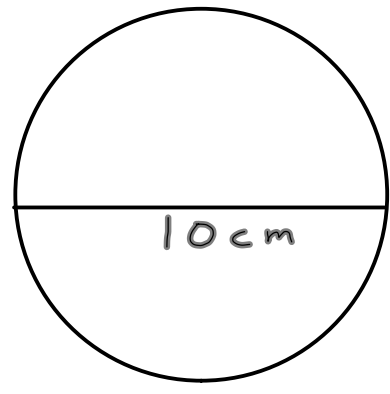
4-4-14
1st Geo



$\angle BDC = 80^\circ$
 $\angle BAC = ?$



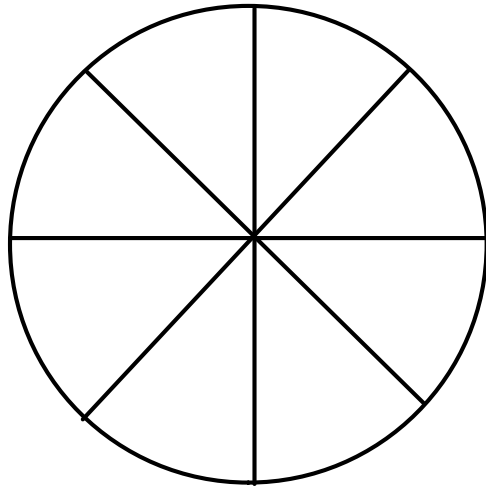
$\odot C$
 $\angle ADB = 32^\circ$
 $\angle ACB = ?64$



What is
 the area
 of the
 circle with
 diameter of
 10 cm?

$$\begin{aligned}
 A &= \pi r^2 \\
 &= \pi \cdot 5^2 \\
 &= 25\pi \\
 &\approx 78.5 \text{ cm}^2
 \end{aligned}$$

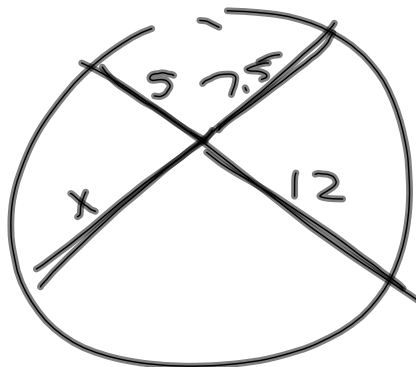
16 inch pizza



$$\begin{aligned} A &= \pi \cdot 8^2 \\ &= 64\pi \\ &\approx 201 \text{ in}^2 \end{aligned}$$

How much area is in each slice?

$$\frac{201}{8} \approx 25 \text{ in}^2$$



$$7.5 \cdot x = 12 \cdot 5$$