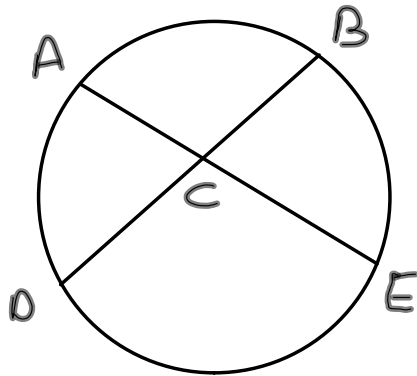
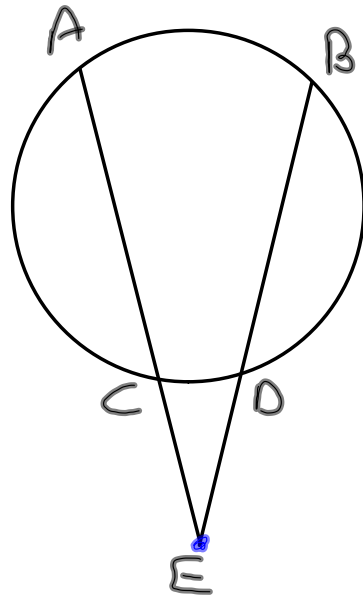


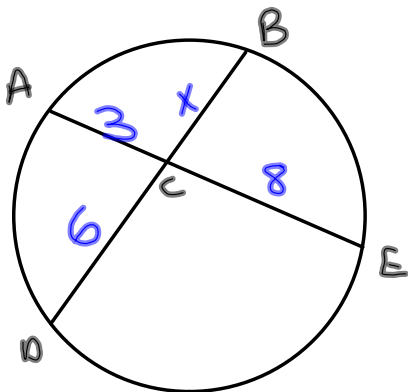
4-3-14



$$AC \cdot CE = DC \cdot CB$$



$$EC \cdot EA = ED \cdot EB$$

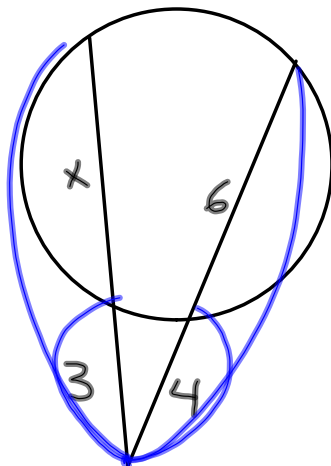


$$\begin{aligned} AC &= 3 & CE &= 8 \\ CD &= 6 & BC &= ? \end{aligned}$$

$$6 \cdot x = 3 \cdot 8$$

$$6x = 24$$

$$x = 4$$



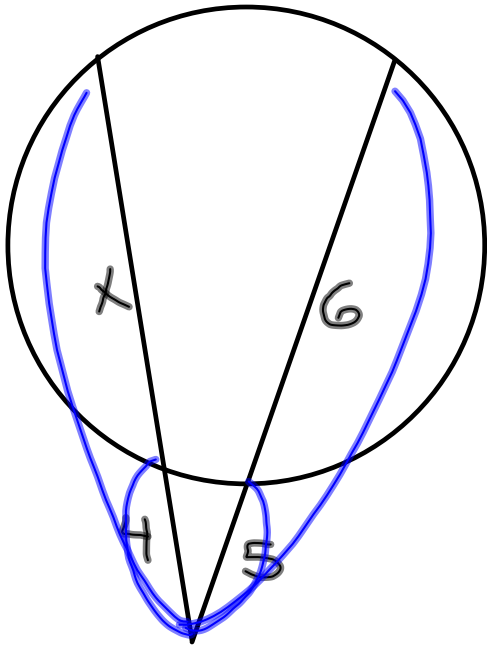
$$3 \cdot (3+x) = 4 \cdot 10$$

$$9 + 3x = 40$$

$$\begin{array}{r} 9 + 3x = 40 \\ -9 \qquad -9 \\ \hline 3x = 31 \end{array}$$

$$3x = 31$$

$$x = 10\frac{1}{3}$$



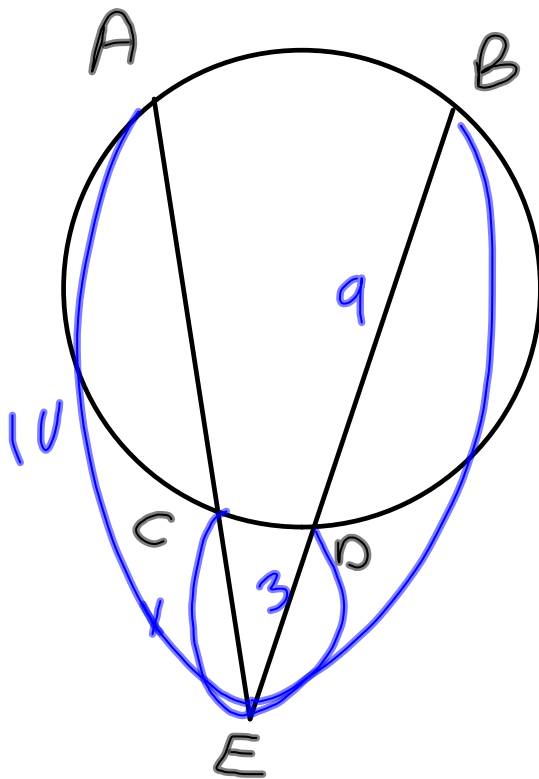
$$4 \cdot (4+x) = 5 \cdot 11$$

$$16 + 4x = 55$$

$$\begin{array}{r} -16 \qquad \qquad -16 \\ \hline \end{array}$$

$$\frac{4x}{4} = \frac{39}{4}$$

$$x = 9 \frac{3}{4} = 9.75$$



$$x \cdot 10 = 3 \cdot 12$$

$$10x = 36$$

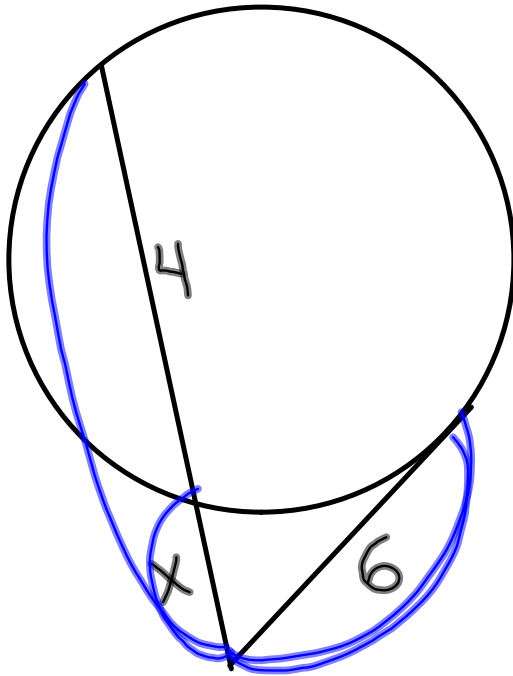
$$x = 3.6$$

$$AE = 10$$

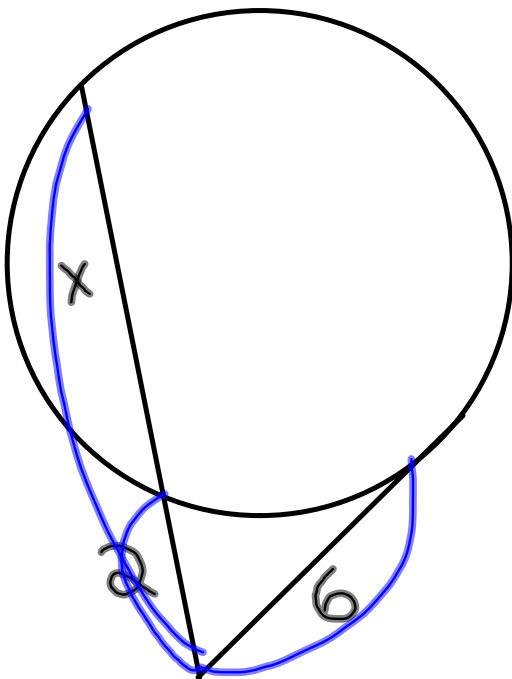
$$DB = 9$$

$$ED = 3$$

$$CE = ?$$



$$x \cdot (x+4) = 6 \cdot 6$$



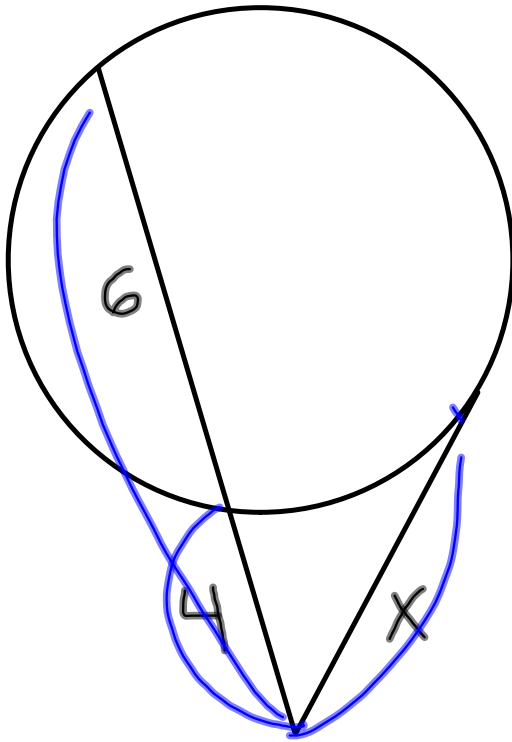
$$2 \cdot (2+x) = 6 \cdot 6$$

$$4 + 2x = 36$$

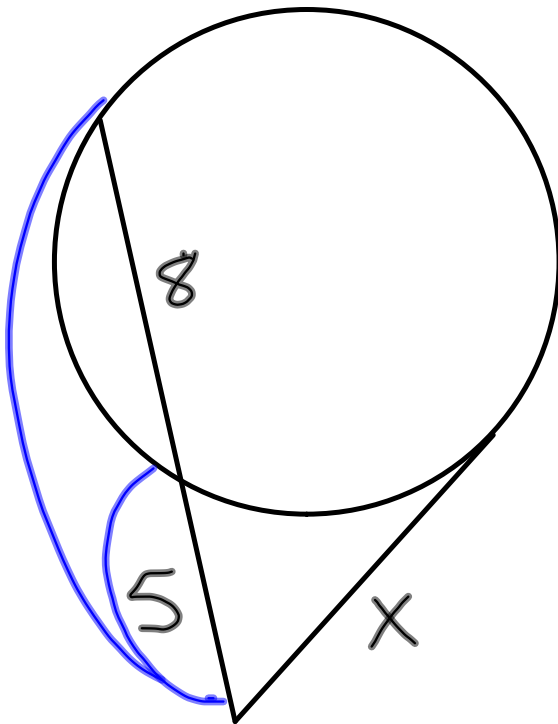
$$\begin{array}{r} -4 \qquad \qquad -4 \\ \hline \end{array}$$

$$2x = 32$$

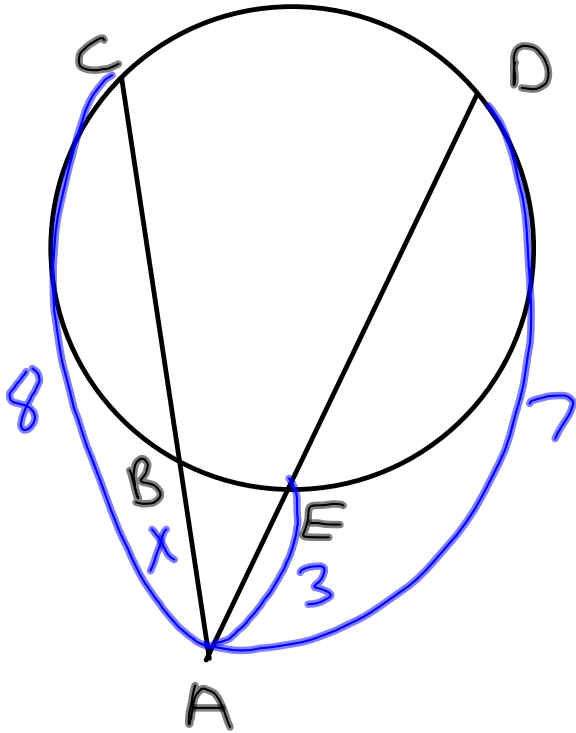
$$x = 16$$



$$4 \cdot 10 = x \cdot x$$
$$\sqrt{40} = \sqrt{x^2}$$
$$6.3 \approx x$$



$$5 \cdot 13 = x \cdot x$$
$$\sqrt{65} = \sqrt{x^2}$$
$$8.1 \approx x$$



$$x \cdot 8 = 3 \cdot 7$$

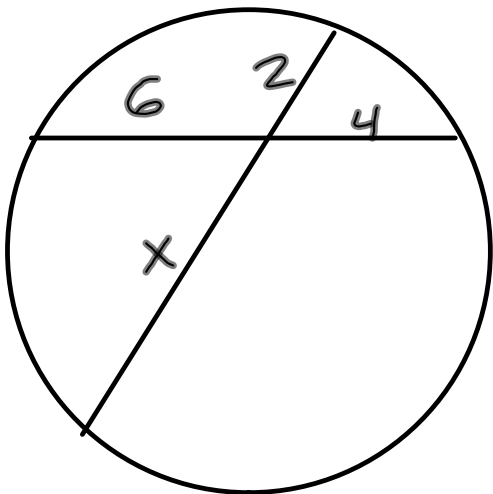
$$\frac{8x}{8} = \frac{21}{8}$$

$$x = 2\frac{5}{8}$$

$$= 2.625$$

$$AC = 8 \quad AE = 3$$

$$AB = ? \quad AD = 7$$



$$2 \cdot x = 6 \cdot 4$$

$$2x = 24$$

$$x = 12$$