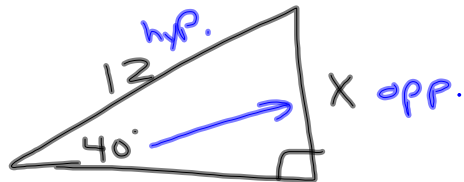


3-24-14

1st Geo

Test tomorrow

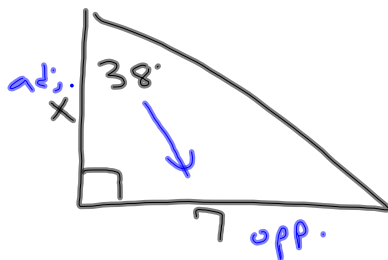
①



$$\frac{\sin 40}{1} = \frac{x}{12}$$

$$x = 12 \cdot \sin 40$$

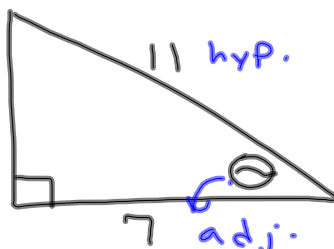
$$x \approx 7.7$$



$$\frac{\tan 38}{1} = \frac{7}{x}$$

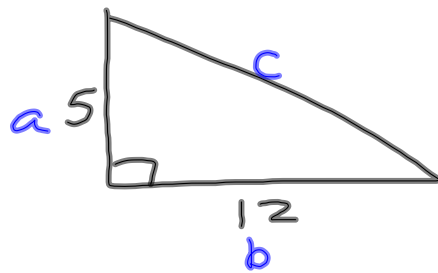
$$\frac{x \cdot \tan 38}{\tan 38} = \frac{7}{\tan 38}$$

$$x \approx 9.0$$



$$\cos^{-1} \frac{7}{11} = \cos^{-1} \frac{7}{11}$$

$$\theta \approx 50.5^\circ$$



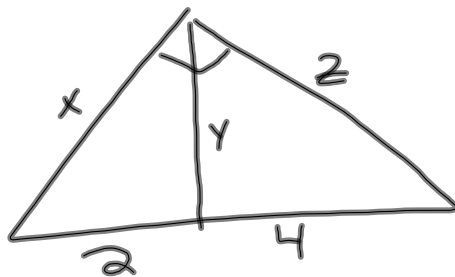
$$a^2 + b^2 = c^2$$

$$5^2 + 12^2 = c^2$$

$$25 + 144 = c^2$$

$$\sqrt{169} = \sqrt{c^2}$$

$$13 = c$$

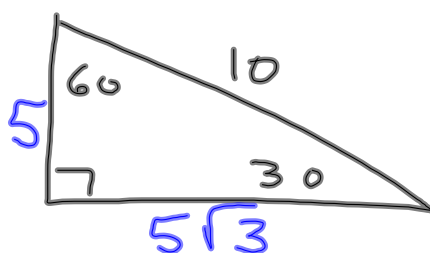


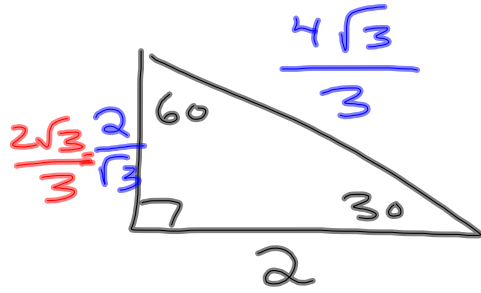
$$x = \sqrt{2 \cdot 6} = \sqrt{12} = 2\sqrt{3}$$

$$y = \sqrt{2 \cdot 4} = \sqrt{8} = 2\sqrt{2}$$

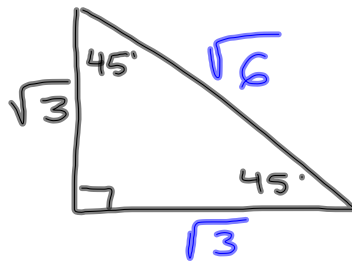
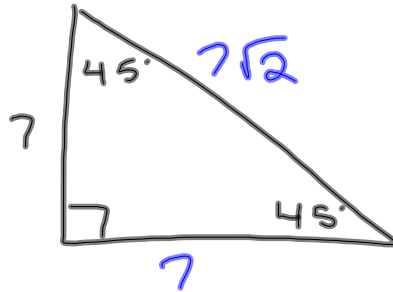
$$z = \sqrt{4 \cdot 6} = \sqrt{24} = 2\sqrt{6}$$

~~2~~ · ~~2~~ · 2 · 3

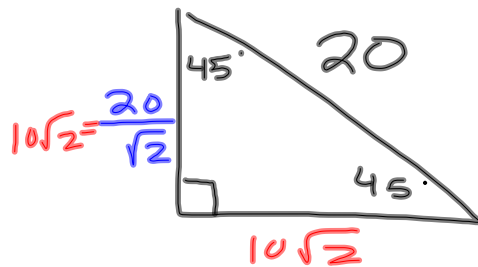




$$\frac{2}{\sqrt{3}} \cdot \frac{\sqrt{3}}{\sqrt{3}} = \frac{2\sqrt{3}}{3}$$



$$\sqrt{3} \cdot \sqrt{2} =$$



$$\frac{20}{\sqrt{2}} \cdot \frac{\sqrt{2}}{\sqrt{2}} = \frac{20\sqrt{2}}{2} = 10\sqrt{2}$$

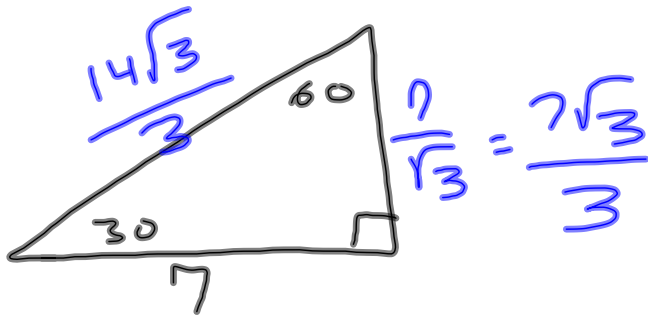
Simplify $\frac{12}{\sqrt{6}}$

$$\frac{12}{\sqrt{6}} \cdot \frac{\sqrt{6}}{\sqrt{6}} = \frac{\cancel{12}^2 \sqrt{6}}{\cancel{6}_1} = 2\sqrt{6}$$

Simplify $\sqrt{180}$

180
6 30
2 3 3 10
2 5

$$\sqrt{\cancel{2} \cdot \cancel{2} \cdot \cancel{3} \cdot \cancel{3} \cdot 5}$$
$$2 \cdot 3 \sqrt{5}$$
$$6\sqrt{5}$$



$$\frac{7}{\sqrt{3}} \cdot \frac{\sqrt{3}}{\sqrt{3}} = \frac{7\sqrt{3}}{3}$$