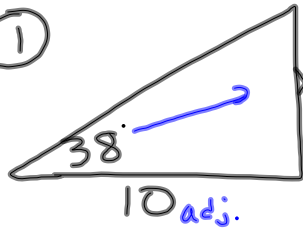


3-20-14

Review Ch 8

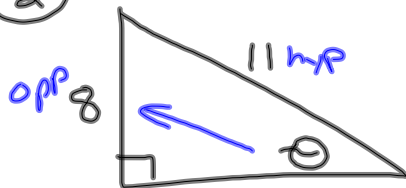
①



$$\frac{\tan 38}{1} = \frac{X}{10}$$

$$X = 10 \cdot \tan 38^\circ \\ \approx 7.8$$

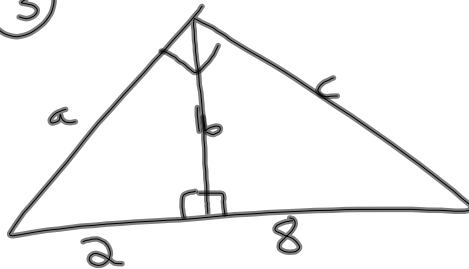
②



$$\sin^{-1} \sin \theta = \sin^{-1} \frac{8}{11}$$

$$\theta \approx 46.7^\circ$$

③

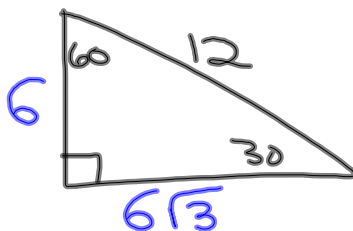


$$a = \sqrt{2 \cdot 10} = \sqrt{20} = 2\sqrt{5}$$

$$b = \sqrt{2 \cdot 8} = \sqrt{16} = 4$$

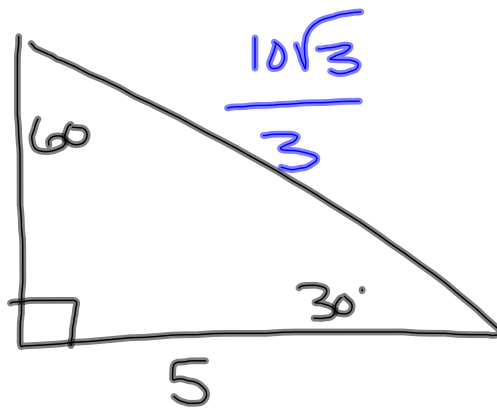
$$c = \sqrt{8 \cdot 10} = \sqrt{80} = 4\sqrt{5}$$

④



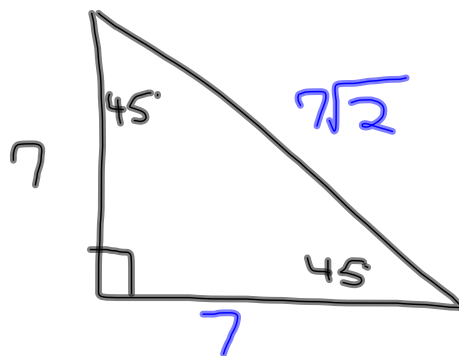
5

$$\frac{5\sqrt{3}}{3} = \frac{5}{3}\sqrt{3}$$



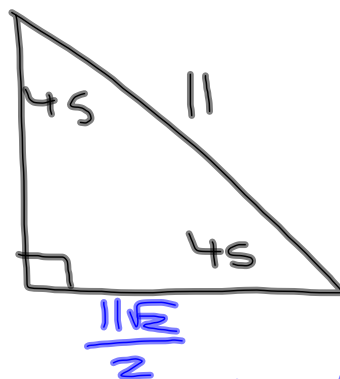
$$\frac{5}{\sqrt{3}} \cdot \frac{\sqrt{3}}{\sqrt{3}} = \frac{5\sqrt{3}}{3}$$

6



7

$$\frac{11\sqrt{2}}{2} = \frac{11}{\sqrt{2}}$$



$$\frac{11}{\sqrt{2}} \cdot \frac{\sqrt{2}}{\sqrt{2}} = \frac{11\sqrt{2}}{2}$$