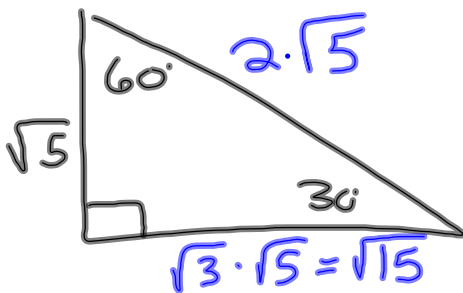
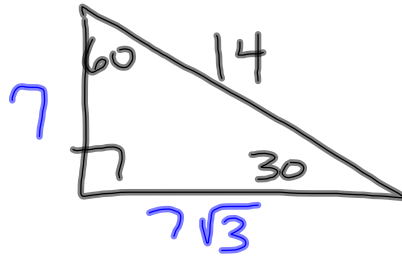
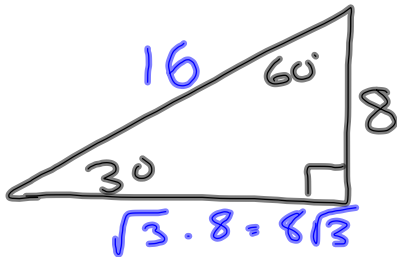
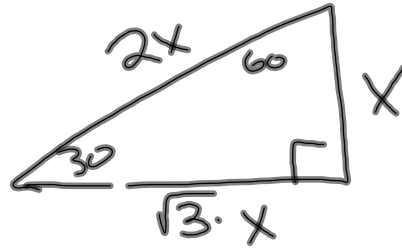
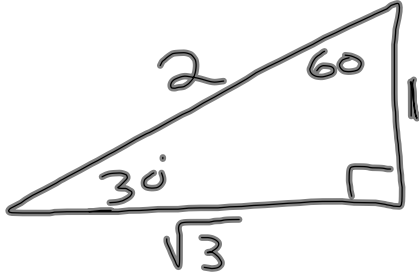


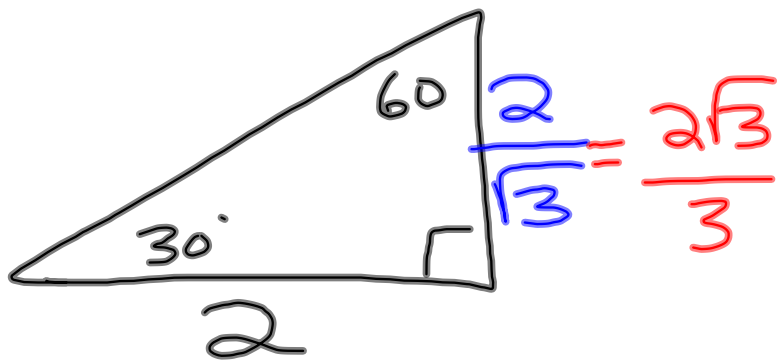
3-12-14  
1<sup>st</sup> Geo



$$2\sqrt{3} \cdot 5\sqrt{2} = 10\sqrt{6}$$

$$2\sqrt{2} \cdot 8\sqrt{5} = 16\sqrt{10}$$

$$5\sqrt{3} \cdot \sqrt{3} = 5\sqrt{9} = 5 \cdot 3 = 15$$



$$\frac{2}{\sqrt{3}} \cdot \frac{\sqrt{3}}{\sqrt{3}} = \frac{2\sqrt{3}}{3}$$

Practice

$$\frac{5}{\sqrt{11}} \cdot \frac{\sqrt{11}}{\sqrt{11}} = \frac{5\sqrt{11}}{11}$$

$$\frac{4}{\sqrt{3}} \cdot \frac{\sqrt{3}}{\sqrt{3}} = \frac{4\sqrt{3}}{3}$$