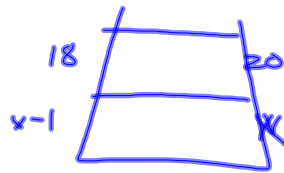
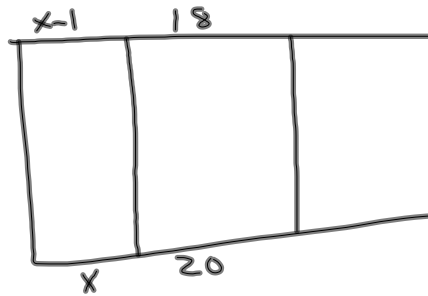


2-27-14

1<sup>st</sup> Geo

Ch. 7 PT2

③

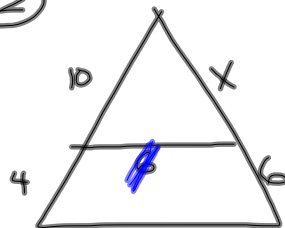


$$\frac{18}{x-1} = \frac{20}{x}$$

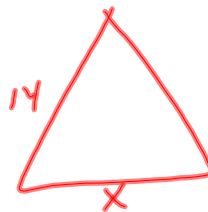
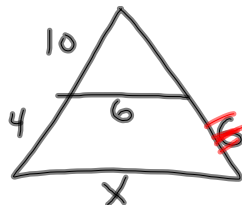
$$\begin{array}{r} 20x - 20 = 18x \\ -20x \quad -20x \\ \hline -20 = -2x \\ \frac{-20}{-2} = \frac{-2x}{-2} \end{array}$$

$$10 = x$$

②

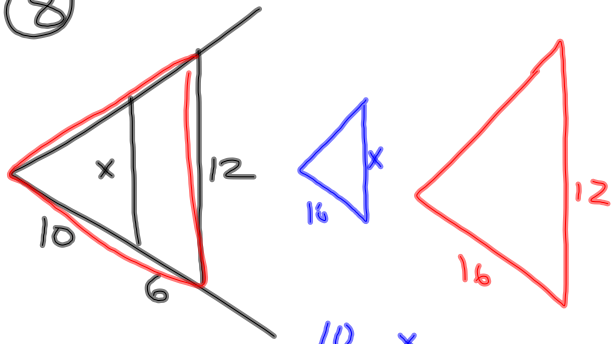


$$\begin{array}{l} \frac{10}{4} = \frac{x}{6} \\ 4x = 60 \\ x = 15 \end{array}$$



$$\begin{array}{l} \frac{10}{14} = \frac{6}{x} \\ \frac{10x}{10} = \frac{84}{10} \\ x = 8.4 \end{array}$$

8



$$\frac{10}{16} = \frac{x}{12}$$

$$\frac{16x}{16} = \frac{120}{16}$$

$$x = 7.5$$

### Practice

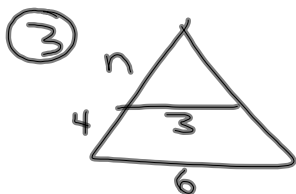
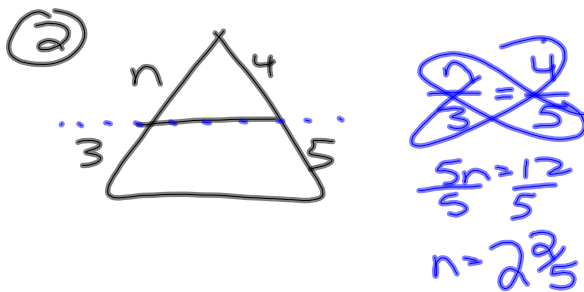
1-6

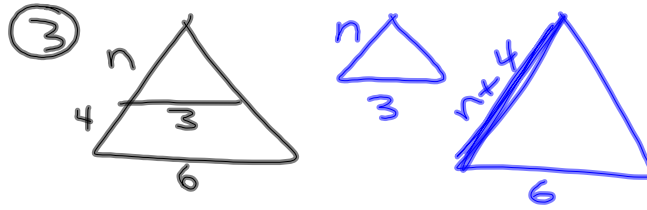
Solve for n

①  $\frac{n+2}{4} = \frac{n+3}{3}$

$$4(n+3) = 3(n+2)$$

$$\begin{array}{r} 4n+12 = 3n+6 \\ -3n \quad -3n \\ \hline n+12 = 6 \\ -12 \quad -12 \\ \hline n = -6 \end{array}$$

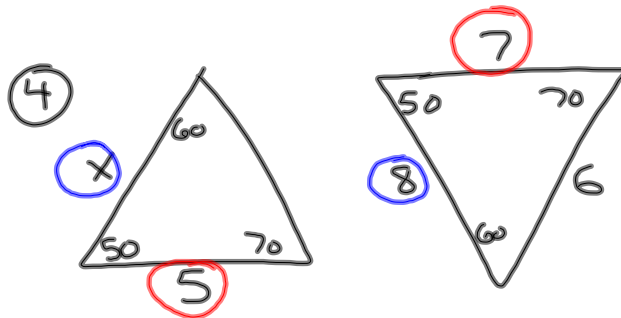




$$\frac{n}{n+4} = \frac{3}{6}$$

$$3n + 12 = 6n$$

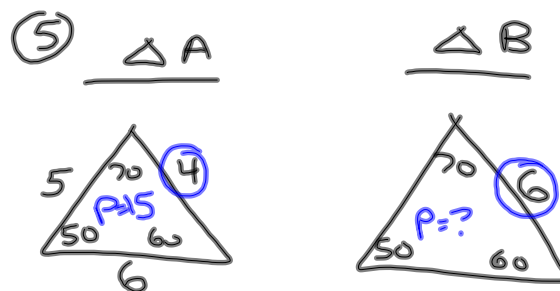
$$\begin{array}{r} 3n + 12 = 6n \\ -3n \quad -3n \\ \hline 12 = 3n \\ n = 4 \end{array}$$



$$\frac{x}{8} = \frac{5}{7}$$

$$\frac{7x}{7} = \frac{40}{7}$$

$$x = 5\frac{5}{7} \approx 5.7$$

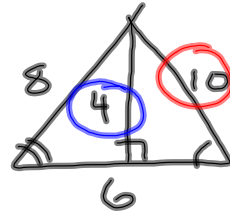
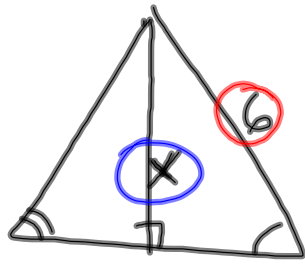


What is perimeter of  $\triangle B$ ?

$$\frac{4}{6} = \frac{15}{P}$$

$$\frac{4}{4} P = \frac{90}{4}$$

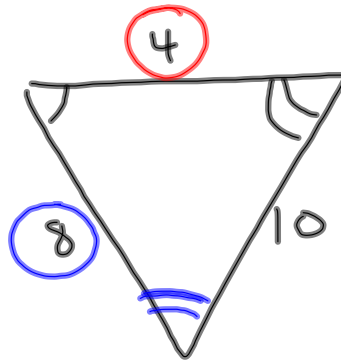
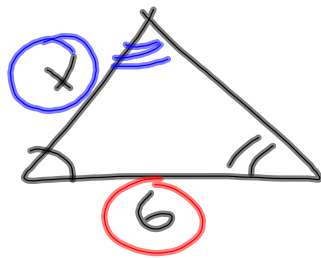
$$P = 22.5$$



$$\frac{x}{4} = \frac{6}{10}$$

$$10x = 24$$

$$x = 2.4$$



$$\frac{x}{8} = \frac{6}{4}$$

$$4x = 48$$

$$x = 12$$