

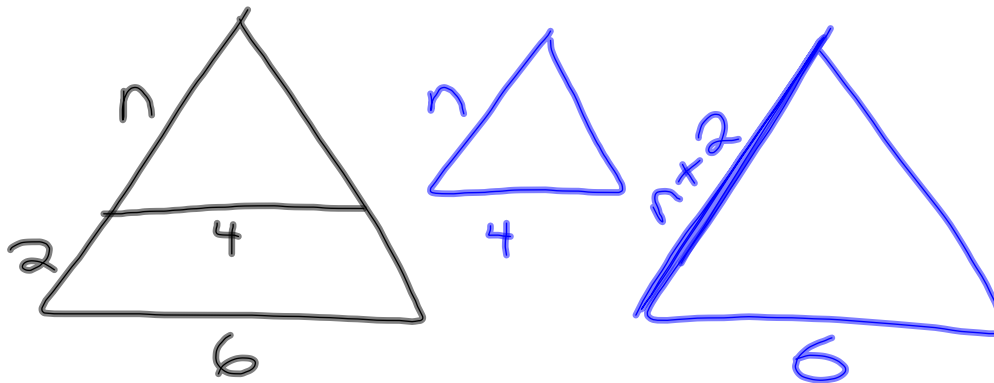
2-21-14  
1<sup>st</sup> Geo

## Chapter 7 Review

$$\begin{aligned} \textcircled{1} \quad \frac{n}{4} &= \frac{n+3}{5} \\ 5n &= 4(n+3) \\ 5n &= 4n+12 \\ \frac{-4n \quad -4n}{n} &= \frac{12}{12} \end{aligned}$$

$$\begin{aligned} \textcircled{2} \quad \frac{n-3}{2} &= \frac{n+4}{5} \\ 5(n-3) &= 2(n+4) \\ 5n-15 &= \textcircled{2n} + 8 \\ \frac{-2n \quad -2n}{3n-15} &= \frac{8}{8} \\ \frac{3n-15}{+15 \quad +15} &= \frac{8}{8} \\ \frac{3n}{3} &= \frac{23}{3} \\ n &= 7\frac{2}{3} \quad (7.\overline{6}) \end{aligned}$$

$$\begin{aligned} \textcircled{3} \quad \begin{array}{c} \triangle \\ \hline \end{array} \quad \begin{array}{l} \text{top-left side: } 2 \\ \text{top-right side: } 3 \\ \text{bottom-left side: } n \\ \text{bottom-right side: } 4 \end{array} \quad \begin{aligned} \frac{2}{n} &= \frac{3}{4} \\ \frac{3n}{3} &= \frac{8}{3} \\ n &= 2\frac{2}{3} \end{aligned} \end{aligned}$$



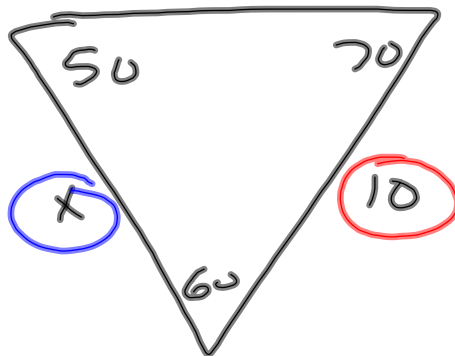
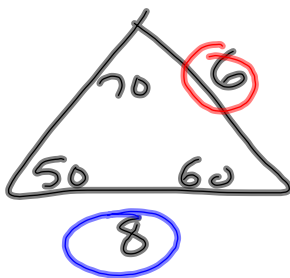
$$\frac{n}{n+2} = \frac{4}{6}$$

$$6n = 4n + 8$$

$$\begin{array}{r} -4n \quad -4n \\ \hline 2n = 8 \end{array}$$

$$2n = 8$$

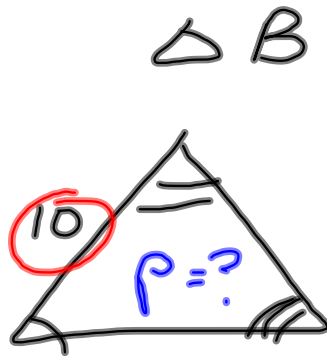
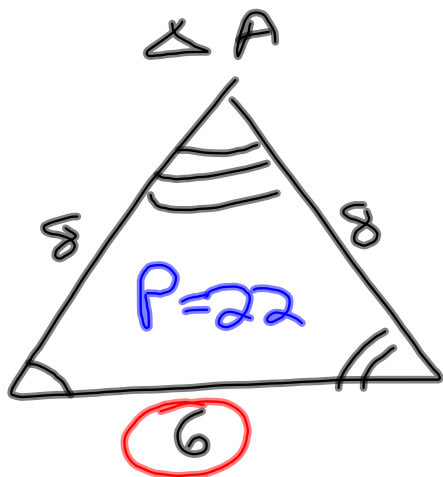
$$n = 4$$



$$\frac{8}{x} = \frac{6}{10}$$

$$\frac{6x}{6} = \frac{80}{6}$$

$$x = 13\frac{1}{3} (13.\bar{3})$$



Find  $\triangle B$ 's perimeter

$$\frac{6}{10} = \frac{22}{P}$$

$$\frac{6P}{6} = \frac{220}{6}$$

$$P = 36\frac{2}{3}$$