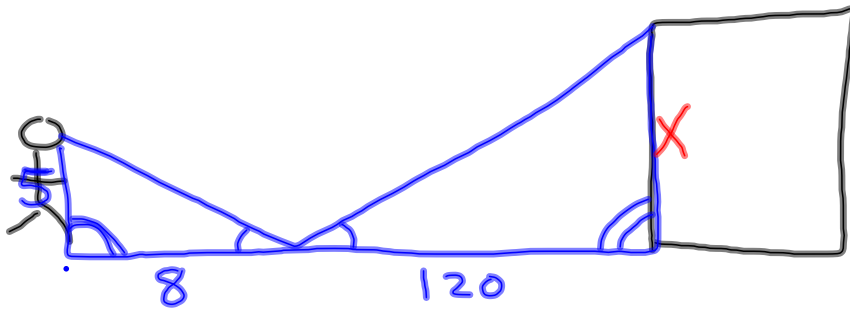


2-20-14  
1<sup>st</sup> Geo

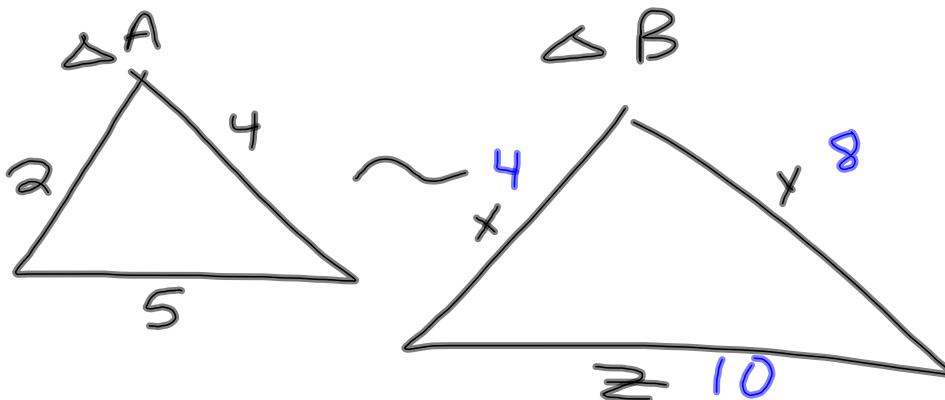


$$\frac{5}{x} = \frac{x}{120}$$

$$\frac{5x}{8} = \frac{600}{8}$$

$$x = 75$$

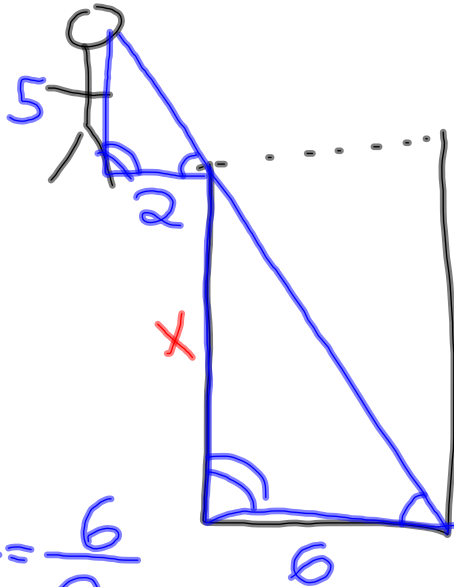
The ratio of the perimeter of  $\triangle A$  to  $\triangle B$  is 1:2.



What is  $x + y$ ?

$$4 + 8$$

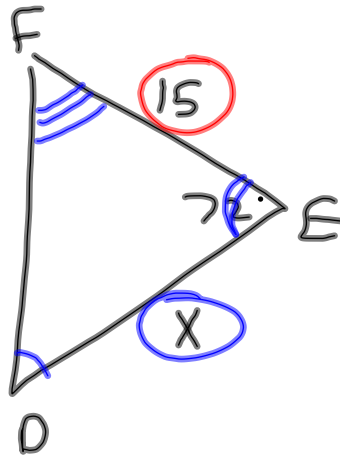
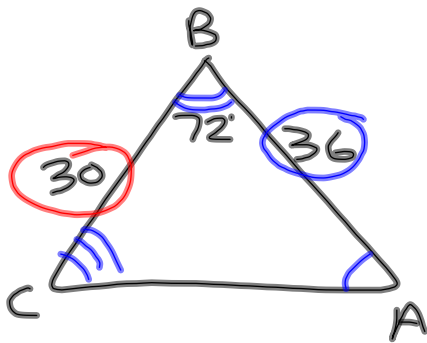
$$12$$



$$\frac{x}{5} = \frac{6}{2}$$

$$2x = 30$$

$$x = 15$$

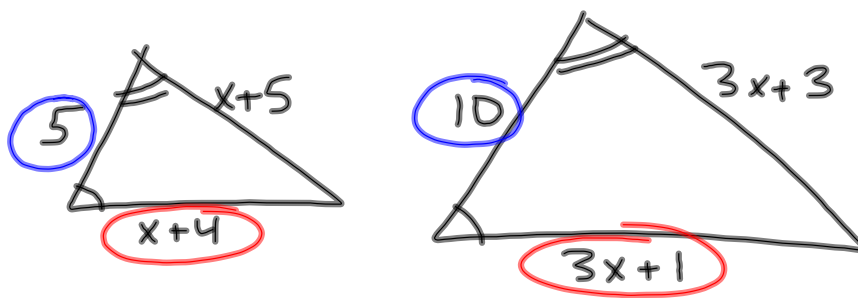


IF  $\triangle ABC \sim \triangle DEF$ , what is  $x$ ?

$$\frac{36}{x} = \frac{30}{15}$$

$$\frac{30x}{30} = \frac{540}{30}$$

$$x = 18$$



What is  $x$ ?

$$\frac{5}{10} = \frac{x+4}{3x+1}$$

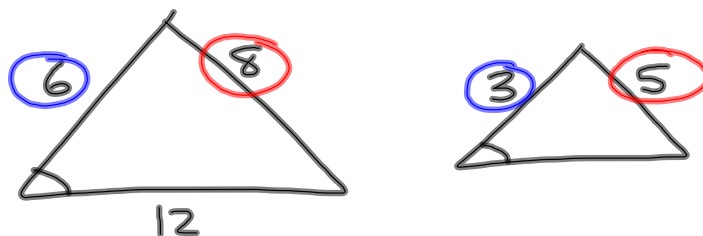
$$10x+40 = 15x+5$$

$$\begin{array}{r} -10x \quad -10x \\ \hline 40 = 5x+5 \\ -5 \quad -5 \\ \hline 35 = 5x \end{array}$$

$$\frac{35}{5} = \frac{5x}{5}$$

$$7 = x$$

Are the  $\triangle$ s similar



$$\frac{3}{6} = \frac{5}{8} \quad \text{No}$$