

12-5-13

1st Geo

① What is the 3rd side of a triangle if it has legs of

a.) 2, 6 $6-2 < m < 6+2$

b.) 3, 3 $0 < m < 6$

c.) 10, 25 $15 < m < 35$

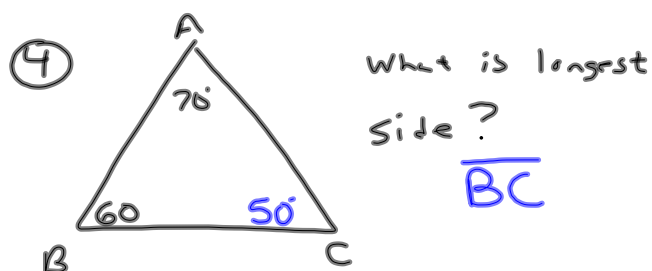
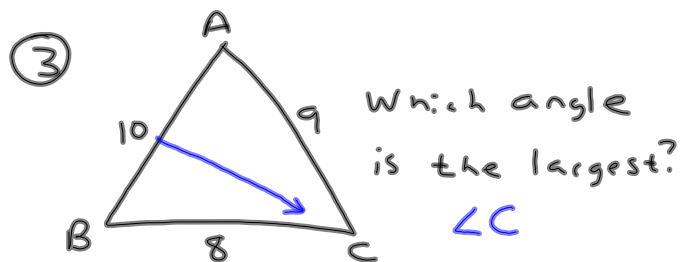
② State if the following measurements could make a triangle?

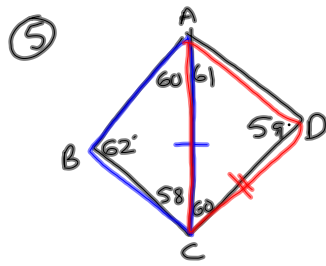
A.) $2, 8, 9$ $6 < 10$ Yes

B.) $1, 7, 10$ $6 < 8$ X NO

C.) $4, 4, 4$ $0 < 8$ Yes

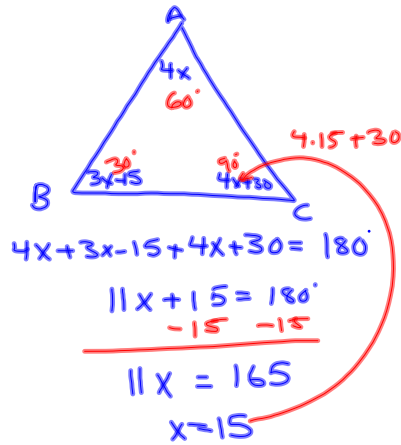
D.) $8, 6, 14$ $2 < 14$ X NO





Which side is longest?
 \overline{CD}

⑥ In $\triangle ABC$, $\angle A = 4x$,
 $\angle B = 3x - 15$, and $\angle C = 4x + 30$.
 Determine the longest and
 shortest side of $\triangle ABC$.



Longest = \overline{AB}
 Shortest = \overline{AC}

