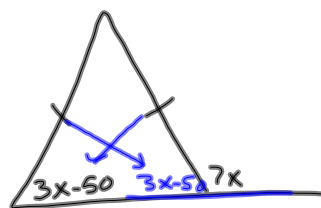
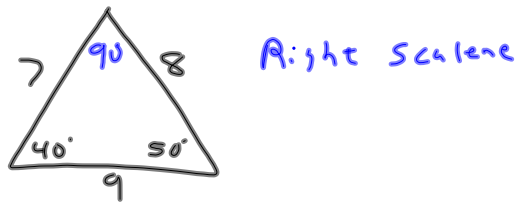
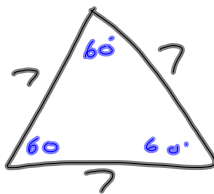
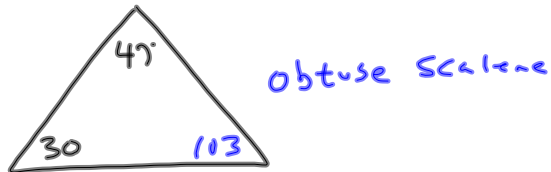
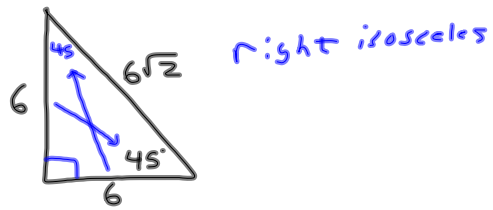


12-16-13  
Geo



Find  $x$ .

$$3x - 50 + 7x = 180$$

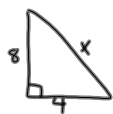
$$10x - 50 = 180$$

$$\begin{array}{r} +50 \quad +50 \\ \hline 10x = 230 \end{array}$$

$$x = 23$$

Line a and b are  $\perp$  to each other. If line a has a slope of 4, what is the slope of b?

$$-\frac{1}{4}$$



Find x.  
 $a^2 + b^2 = c^2$   
 $x = 8.9$

Which equation is perpendicular to  $y = \frac{1}{2}x + 7$ ?

A.)  $y = 2x + 7$   $y = -2x$

B.)  $y = -2x - 1$

C.)  $y = \frac{1}{2}x + 7$

D.) None of the above

B is between A and C

$$AB = 2n \quad BC = n + 11$$

$$AC = 44$$

What is length of AB?



$$AB + BC = AC$$

$$2n + n + 11 = 44$$

$$\frac{3n + 11 = 44}{-11 \quad -11}$$

$$3n = 33$$

$$n = 11$$

$$AB = 2n = 2(11) = 22$$

$(0, 3)$   $(6, -1)$  What is midpoint?

$$\text{midpoint} = \left( \frac{0+6}{2}, \frac{3+(-1)}{2} \right)$$

$$(3, 1)$$

Complementary  $90^\circ$

vs.

Supplementary  $180^\circ$

How many sides does a hexagon have? 6

Converse flip if and then

Inverse negate

Contrapositive both flip and negate

If  $p \rightarrow q$  and  $q \rightarrow r$ , then

$$\underline{p \rightarrow r}$$

transitive

Vertical  $\angle$ 's are equal

True ~~False~~

The sum of the angles in a triangle is  $360^\circ$ .

False  $\uparrow$   $180^\circ$