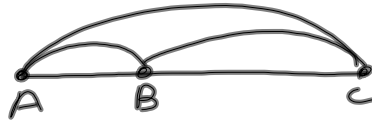


- 14) If B is between A and C on \overline{AC} with $AB = 4n - 2$ and $BC = 2n - 2$, what is AC?



$$AB + BC = AC$$

$$\downarrow$$

$$4n - 2 + 2n - 2 = AC$$

$$6n - 4$$

- 18) Which equation would be perpendicular to the $y = -\frac{1}{7}x + 3$? $m = -\frac{1}{7}$
- A. ~~$y = \frac{1}{7}x - 3$~~ B. ~~$y = \frac{1}{7}x + 3$~~ C. $y = 7x - 5$
- D. None of the above

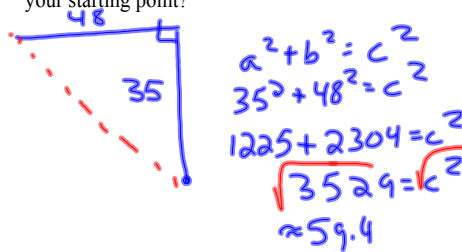
- 17) Which of triangle measurements below is a right triangle?
- A. 2, 4, 7 B. 6, 8, 10 C. 11, 12, 13 D. 12, 14, 16

$$2^2 + 4^2 = 7^2$$

$$4 + 16 = 49$$

$$6^2 + 8^2 = 10^2 \checkmark$$

- 20) If you walk 35 miles due North and then 48 miles due West, rounded to the nearest mile how far are you from your starting point?



- 25) If $\angle A$ and $\angle B$ are a linear pair with $\angle A = n + 40$ and $\angle B = 9n + 20$, what is the measurement of $\angle A$?

$$\frac{9n+20}{n+40}$$

$$9n + 20 + n + 40 = 180$$

$$10n + 60 = 180$$

$$\frac{-60 \quad -60}{10n = 120}$$

$$n = 12$$

$$\angle A = n + 40$$

$$= 12 + 40 = 52$$

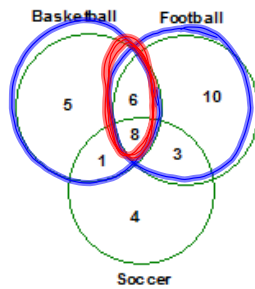
- 32) Consider the statement: "If an angle is 90 degrees, it is a right angle." Is the converse of this statement true or false?

If it is a right angle, then the angle is 90.

True

- 42) If $AB = 6$ and $AB + BC = 10$, then $6 + BC = 10$ demonstrates what property?

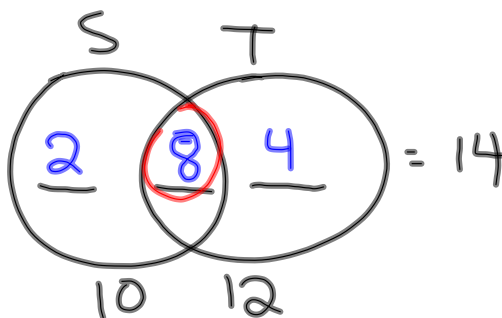
Substitution



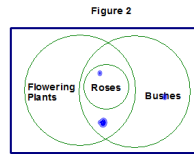
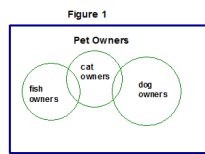
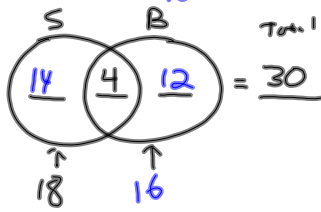
- 48) According to the Venn diagram, how many play football and basketball at the same time?

14

- 50) I have a total of 14 kids. If 10 of my kids play soccer and 12 play tennis, how many play both tennis and soccer? 8

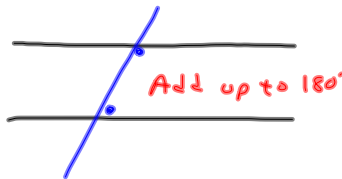


- 57) There are 30 kids who play either soccer or baseball. 4 of the 30 kids play both soccer and baseball. If the soccer team has 18 members, how many kids are on the baseball team? **16**

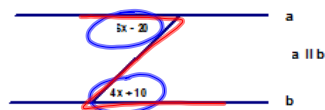


- 54) In Figure 2 above, which statement is true?
- A. No bushes are flowering plants.
 - B. No roses are bushes.
 - C. Some flowering plants are bushes.
 - D. Some roses are not flowering plants.

- 58) If lines are parallel, consecutive interior angles are equal.
- A. True **B. False**



- 60) What is the value of x in the figure below?
- A. 15° B. 16° C. 19° D. 21°



$$\begin{aligned}
 3x - 20 &= 4x + 10 \\
 -4x &\quad -4x \\
 \hline
 -x - 20 &= 10 \\
 +20 &\quad +20 \\
 \hline
 -x &= 30 \\
 x &= 15
 \end{aligned}$$

- 68) What would be the slope of the line that is perpendicular to $y = 5x + 4$?
- A. 5 B. -5 C. $\frac{1}{5}$ **D. $-\frac{1}{5}$**

$m = 5$
 $-\frac{1}{5}$