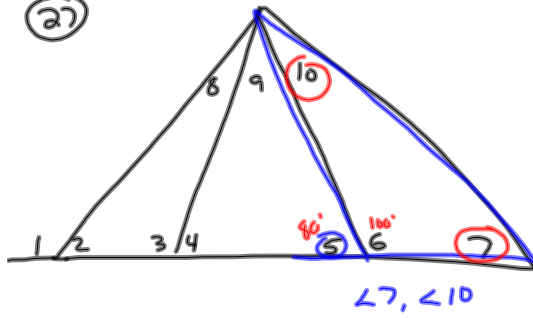


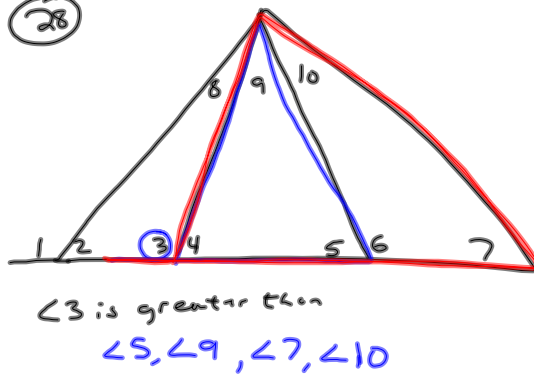
11-25-13
5th Geo

Ch. 5 PT 2

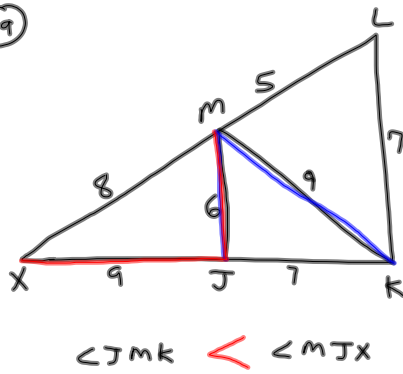
(27)



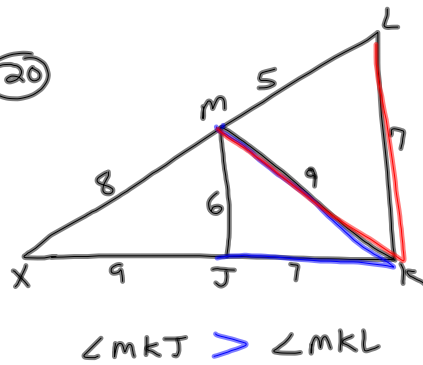
(28)



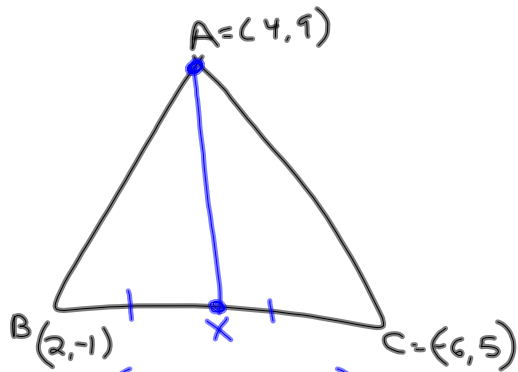
(19)



(20)



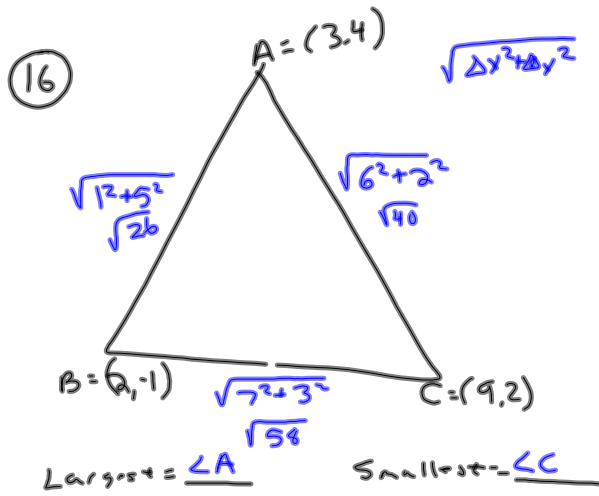
② $A = (4, 9)$
 $B = (2, -1)$
 $C = (-6, 5)$



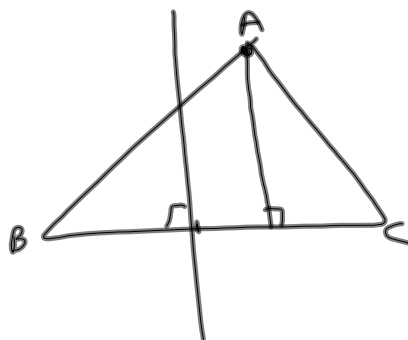
$$X = \left(\frac{2 + (-6)}{2}, \frac{-1 + 5}{2} \right)$$

$$X = \left(\frac{-4}{2}, \frac{4}{2} \right)$$

$$X = (-2, 2)$$

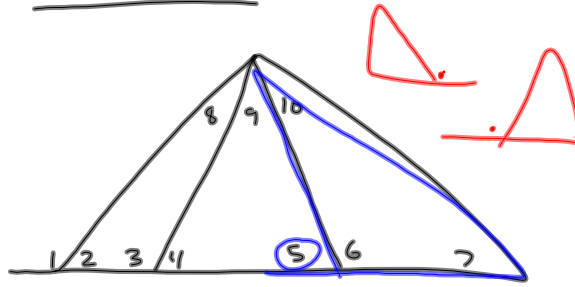


③ \perp bisector

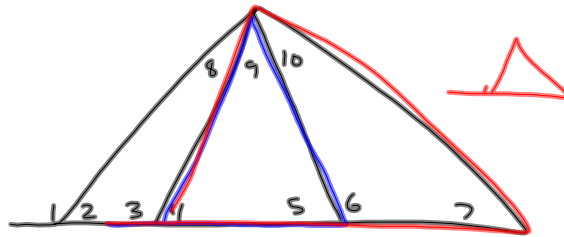


11-25-13
6th Geo

Ch. 5 PT 2



27) Which \angle 's are less than $\angle 5$?
 $\angle 7, \angle 10$



28) Which \angle 's are less than $\angle 3$?
 $\angle 5, \angle 9, \angle 7, \angle 10$

