

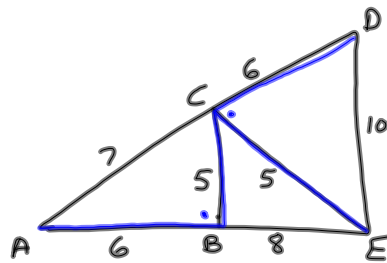
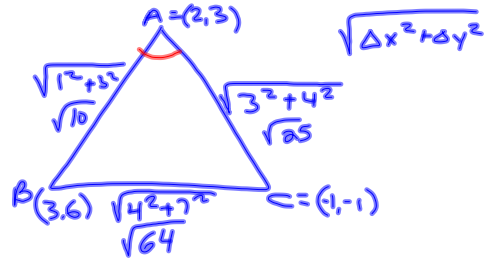
11-22-13

Ch. 5 questions

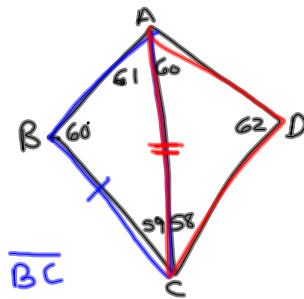
In $\triangle ABC$, $A = (2, 3)$

$B = (3, 6)$ and $C = (-1, -1)$.

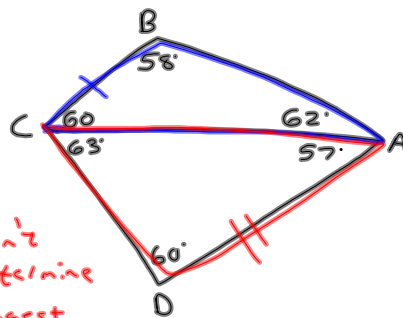
Which angle is largest? $\angle A$



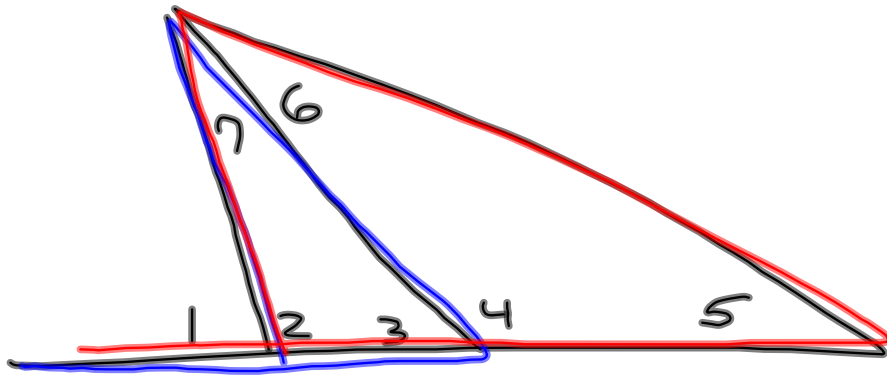
$\angle ABC < \angle DCE$



\overline{BC} is longest side



Can't determine longest side



$\angle 1$ is greater than
 $\angle 3, \angle 7, \angle 5, \angle 6$