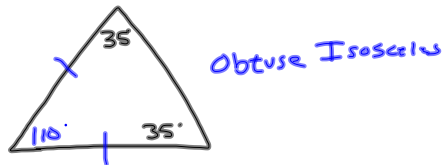


11-21-13  
1st Geo

Test tomorrow

1-10



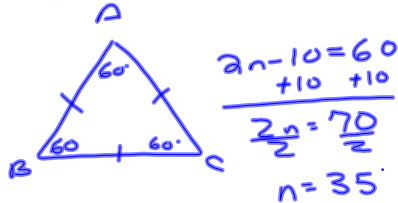
11-14

If  $\triangle ABC \cong \triangle XYZ$ ,

then  $\angle Y = \angle B$ .

and  $\overline{XZ} \cong \overline{AC}$

$\triangle ABC$  is an equilateral triangle with  $\angle A = 2n - 10$ .  
What must  $n$  be?



5 questions on

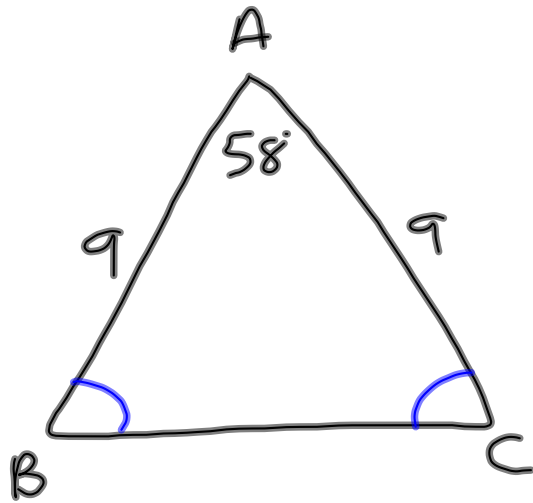
$$y - y_1 = m(x - x_1)$$

What is the equation in SIF that goes through  $(2, 8)$  and is parallel to  $y = 2x - 6$ ?

$m = 2$   
 $\therefore$  parallel slope is 2.

$$y - 8 = 2(x - 2)$$
$$\begin{array}{r} y - 8 = 2x - 4 \\ +8 \quad \quad +8 \\ \hline y = 2x + 4 \end{array}$$

6 problems like



$$\frac{122}{2} = 61$$

What is measurement of  $\angle B$ ?

61°

20 problems on

