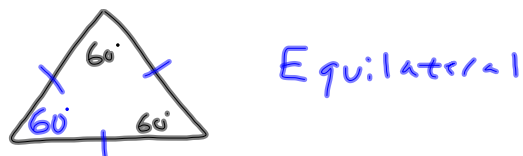
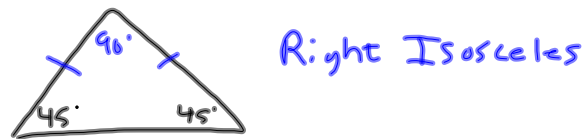
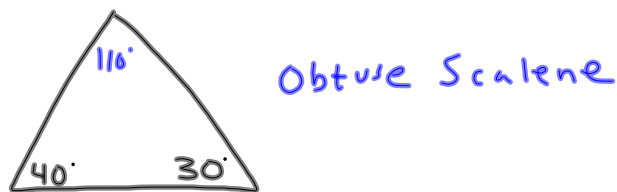
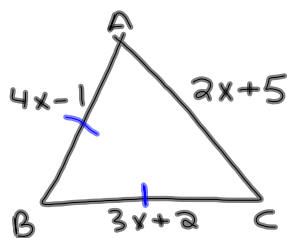


11-14-13  
1<sup>st</sup> Geo

What type of  $\triangle$  do we have ?

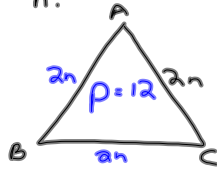


$\triangle ABC$  is an isosceles  $\triangle$   
with  $\overline{AB} \cong \overline{BC}$ . Find  $x$ .



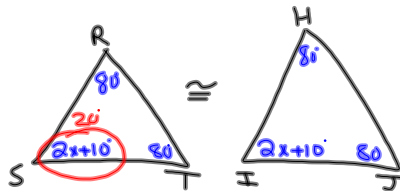
$$\begin{aligned} 4x-1 &= 3x+2 \\ -3x & \quad -3x \\ \hline x-1 &= 2 \\ +1 & \quad +1 \\ \hline x &= 3 \end{aligned}$$

$\triangle ABC$  is an equilateral  $\triangle$   
 with a perimeter of 12.  
 Find  $n$ .



$$\begin{aligned} 2n + 2n + 2n &= 12 \\ 6n &= 12 \\ n &= 2 \end{aligned}$$

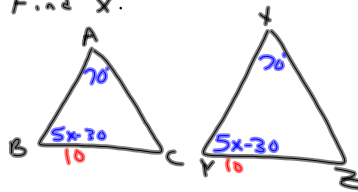
$\triangle RST \cong \triangle HIJ$  with  
 $\angle R = 80^\circ$   
 $\angle I = 2x + 10$  What is  $x$ ?  
 $\angle J = 80^\circ$



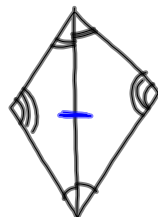
$$\begin{aligned} 2x + 10 &= 80 \\ -10 &-10 \\ \hline 2x &= 70 \\ x &= 35 \end{aligned}$$

$\triangle ABC \cong \triangle XYZ$  with  
 $\angle A = 70^\circ$ ,  $\angle Y = 5x - 30$ ,  $\angle B = 10$ .

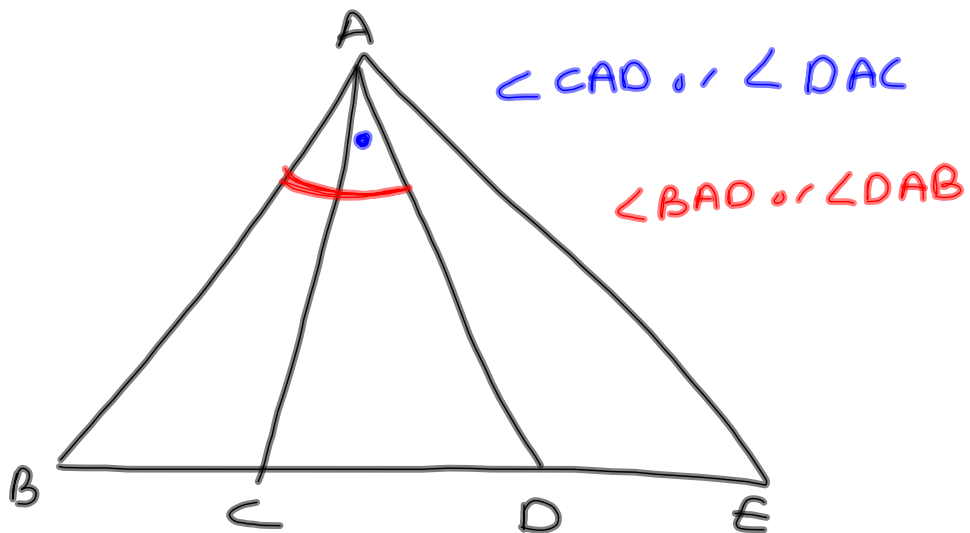
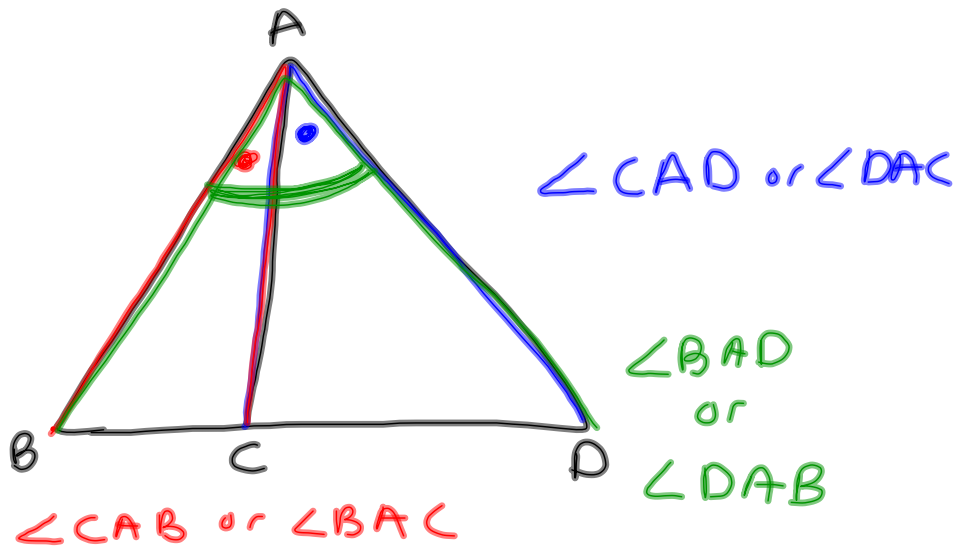
Find  $x$ .



$$\begin{aligned} 5x - 30 &= 70 \\ +30 &+30 \\ \hline 5x &= 100 \\ x &= 20 \end{aligned}$$



ASA  
 AAS



$$y - y_1 = m(x - x_1)$$