

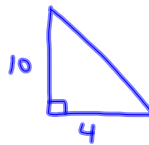
10-7-13

1<sup>st</sup> Geo

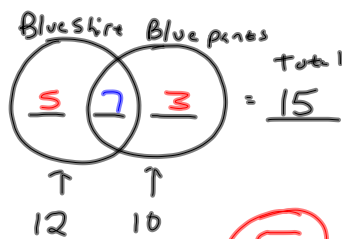
Ch. 2 Practice Test 1 Questions

- 20) Area of  $\triangle$  w/ base of 4 cm and height of 10 cm.

$$\begin{aligned} A &= \frac{1}{2} \cdot b \cdot h \\ &= \frac{1}{2} \cdot 4 \cdot 10 \\ &= 20 \text{ cm}^2 \end{aligned}$$



35)



5

23)

~~25 ft<sup>2</sup>~~

530 ft<sup>2</sup> ✓

~~2500 ft<sup>2</sup>~~

~~30,000 ft<sup>2</sup>~~

---

Class problems

1) What is the inverse of  
"If you are hungry, then  
your stomach grows."

"If you are not hungry, then  
your stomach doesn't grow."

2) What is contrapositive to

"If it is expensive, it  
is well made."

"If it is not well made,  
then it is not expensive."

③ "If you like dogs, you like cats" is represented by  $p \rightarrow q$ . What would represent "if you don't like cats, you like dogs"?  
 $\sim q \rightarrow p$

④ If  $p \rightarrow q$  and  $q \rightarrow r$ , then  $p \rightarrow r$  **Transitive Property**

### Properties

⑤  $AB = AB$  **Reflexive**

⑥ If  $AB = XY$ , then  $XY = AB$ . **Symmetric**

⑦ If  $AB + XY = BC + XY$ , then  $AB = BC$ . **Addition**

⑧ If  $\underline{a} = \underline{AB}$  and  $\underline{AB} + BC = XY$ , then  $\underline{a} + BC = XY$ . **Substitution**

⑨ I have a total of 14 kids. If 10 play soccer and 12 play tennis, how many play both tennis and soccer? **8**

