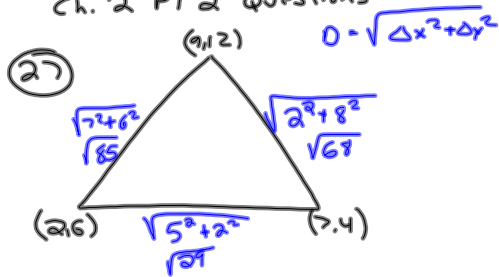
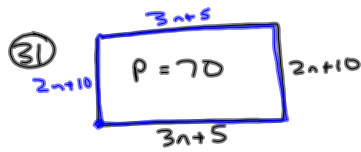


10-3-13  
5<sup>th</sup> Geo

Ch. 2 PT 2 Questions

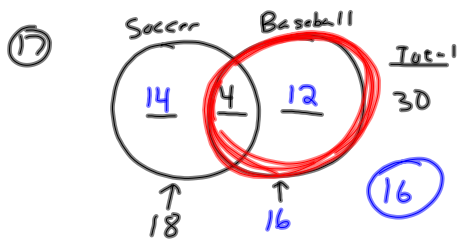
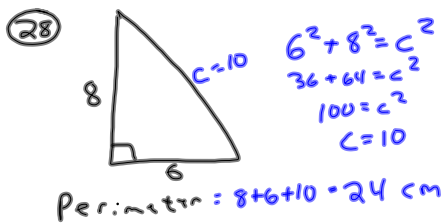


Perimeter =  $\sqrt{85} + \sqrt{29} + \sqrt{68}$   
 $\approx$



$3n+5 + 2n+10 + 3n+5 + 2n+10 = 70$

$$\begin{array}{r} 10n + 30 = 70 \\ -30 \quad -30 \\ \hline 10n = 40 \\ n = 4 \end{array}$$



26

$A = \pi r^2$

$\downarrow$

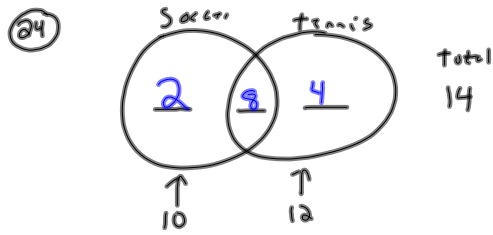
$380.13 = \pi \cdot r^2$

$\frac{380.13}{\pi} = r^2$

$121 = r^2$

$\therefore r = 11$

$C = \pi \cdot d$   
 $= \pi \cdot 22$   
 $\approx 69.1$  cm



6 The contrapositive of "if you have a dog, you like cats" is  
"if you don't like cats, then you don't have a dog."

4 "If a figure is a square, it has 4 right angles."

A.) Is converse true?

False



15 If  $\angle 1 + \angle 2 = 90^\circ$  and  $\angle 2 = \angle 5 + \angle 6$  then  $\angle 1 + \angle 5 + \angle 6 = 90^\circ$  Substitution

$$AB = CD \quad CD = XY$$

$$AB = XY$$

New

p: you are 10  
q: you are a boy  
n: you like tacos

"If you aren't a boy and you like tacos, then you are not 10."

$$\sim q \wedge n \rightarrow \sim p$$

p: you are 10  
q: you are a boy  
n: you like tacos

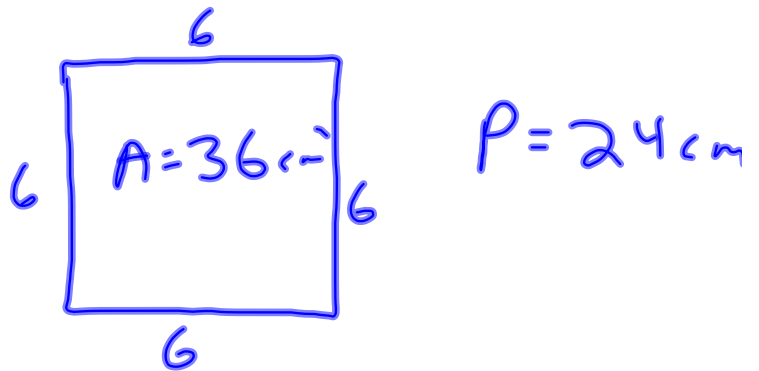
"If you don't like tacos, then you are 10. Therefore, you are a boy"

$$\sim n \rightarrow p \therefore q$$

"You are a boy if and only if you like tacos."

$$q \leftrightarrow n$$

What is the perimeter of a square with an area of  $36\text{cm}^2$ ?

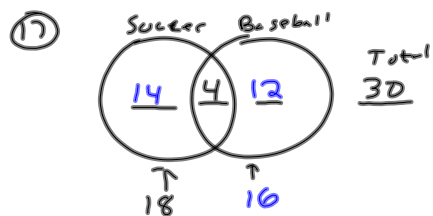


10-3-13  
6<sup>th</sup> Geo

⑤ The converse of all dogs like to chase cats

if it is a dog, then it likes to chase cats

Converse: if it likes to chase cats, then it is a dog.



⑥  $A = \pi r^2$   
 $\frac{380.13}{\pi} = \frac{\pi \cdot r^2}{\pi}$   
 $121 = r^2$   
 $11 = r$

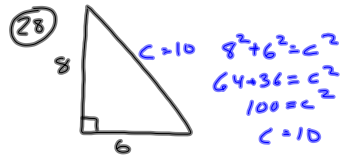
$C = \pi \cdot d$   
 $C = \pi \cdot 22$   
 $\approx 69.1 \text{ cm}$

⑦ Perimeter  $D = \sqrt{\Delta x^2 + \Delta y^2}$

$P = \sqrt{85} + \sqrt{29} + \sqrt{68} = 22.9$

③

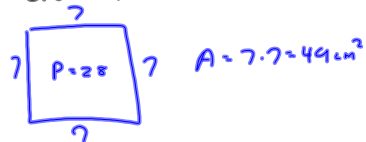
$1^{\text{st}} \quad 2^{\text{nd}} \quad 3^{\text{rd}} \quad 4^{\text{th}}$   
 $3n+5 + 2n+10 + 3n+5 + 2n+10 = 70$   
 $10n + 30 = 70$   
 $\frac{-30 \quad -30}{10n = 40}$   
 $n = 4$



$$P = 8 + 6 + 10 = 24 \text{ cm}$$

New

What is the area of a square that has a perimeter of 28 cm?



p: you like girls  
 q: you are old  
 n: you are nice

"You are nice ~~if and only if~~ you are old."

$$n \leftrightarrow q$$

p: you like girls  
 q: you are old  
 n: you are nice

"If you are not nice and you are old, then you ~~don't~~ like girls."

$$\sim n \wedge q \rightarrow \sim p$$

p: you like girls  
 q: you are old  
 n: you are nice

"If you aren't old, then you like girls. Therefore, you are not nice."

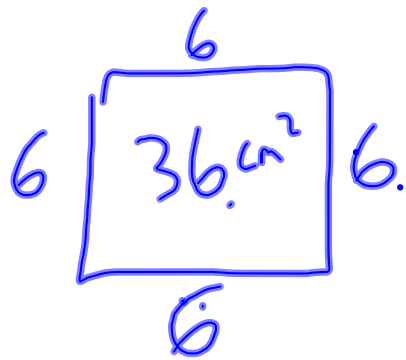
$$\sim q \rightarrow p \therefore \sim n$$

If  $\frac{AB}{AX}$  and  $\frac{CA}{AX}$ ,  $\frac{CB}{AX}$  transition

What is area of a circle  
with a diameter of 10cm?

$$A = \pi r^2$$
$$\pi \cdot 5^2$$
$$25\pi \approx 78.5 \text{ cm}^2$$

If area of a square is  
36 cm<sup>2</sup>, what is its perimeter?



$$P = 6 + 6 + 6 + 6$$
$$24 \text{ cm}$$