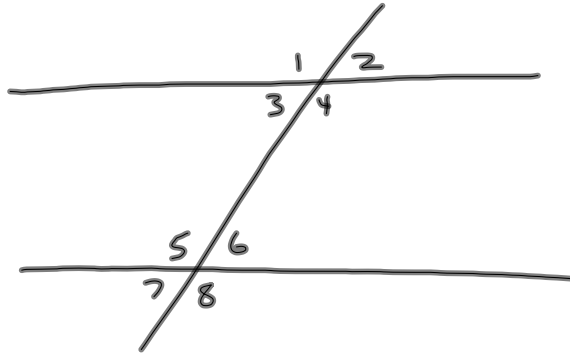
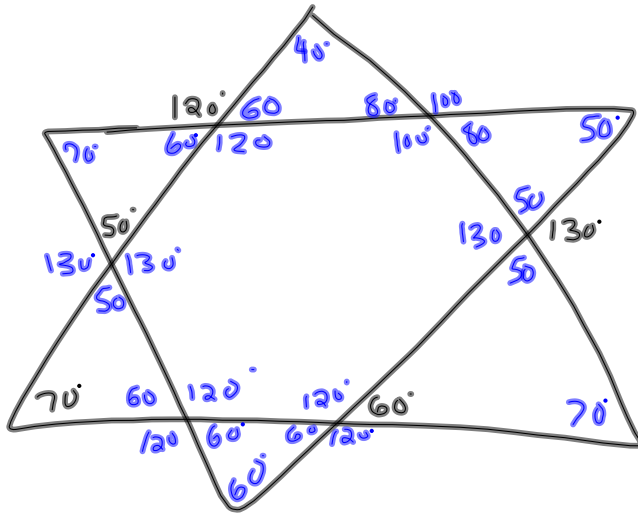
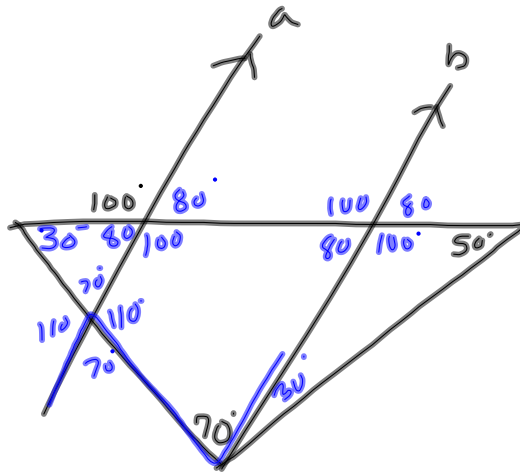
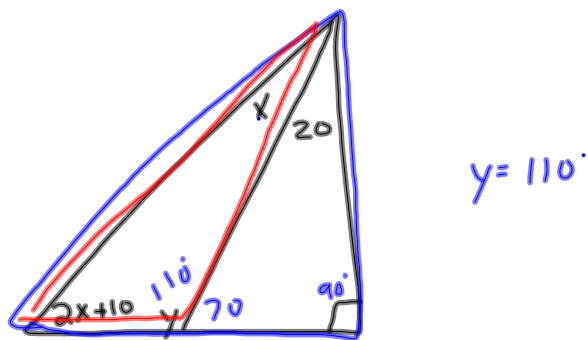
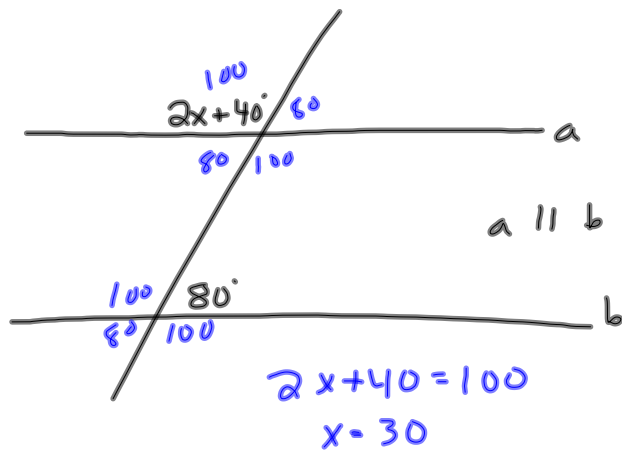


10-15-13
5th Geo

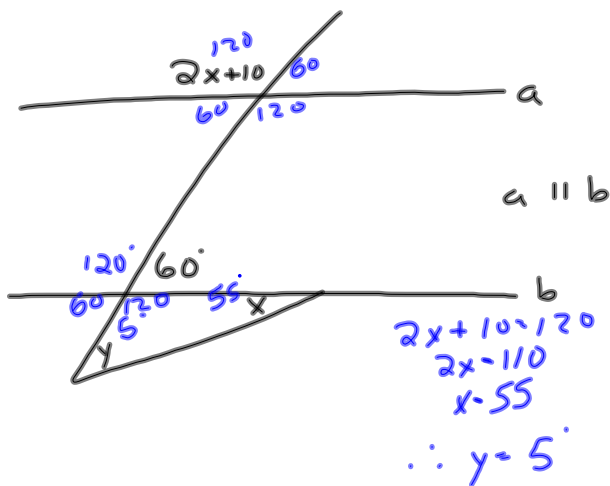


Names of angles - Oral

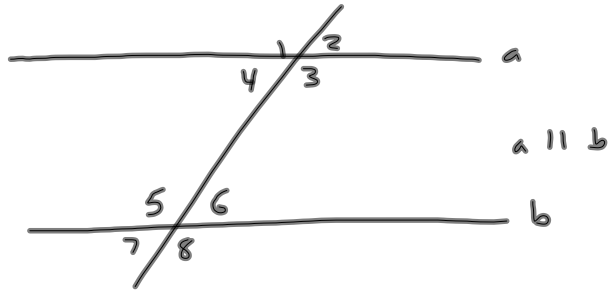




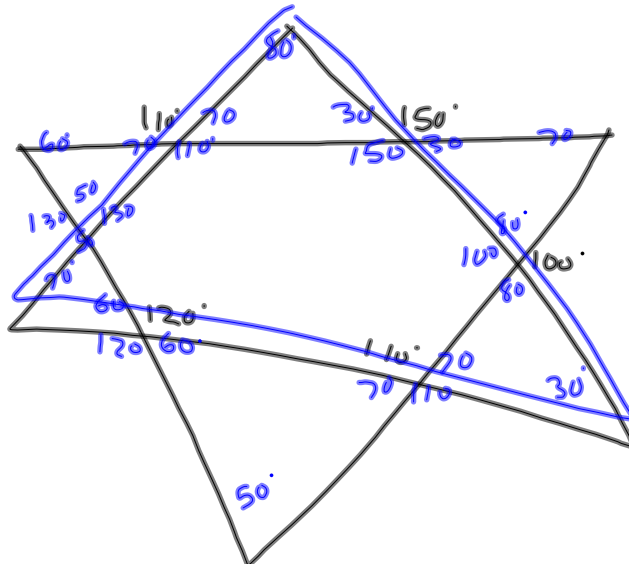
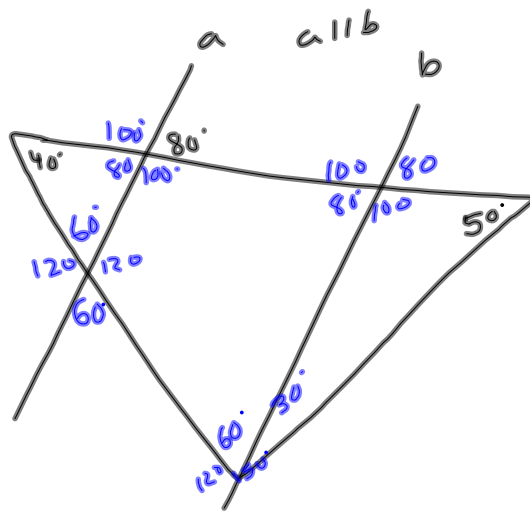
① $2x + 10 + x + 20 + 90 = 180$
 ② $2x + 10 + 110 + y = 180$
 $3x + 120 = 180$
 $3x = 60$
 $x = 20$

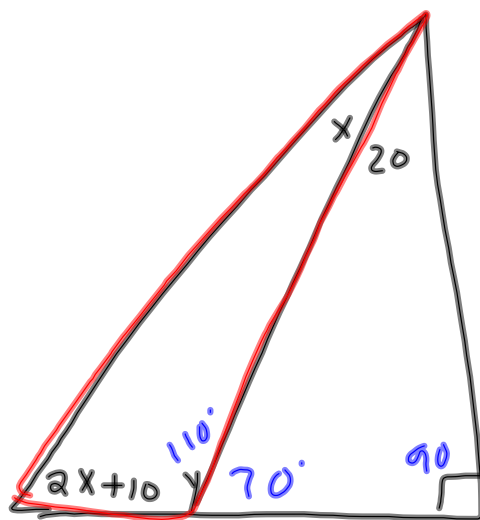
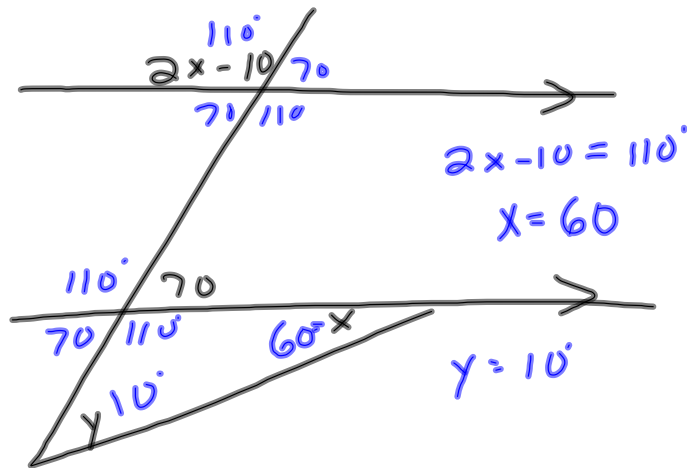
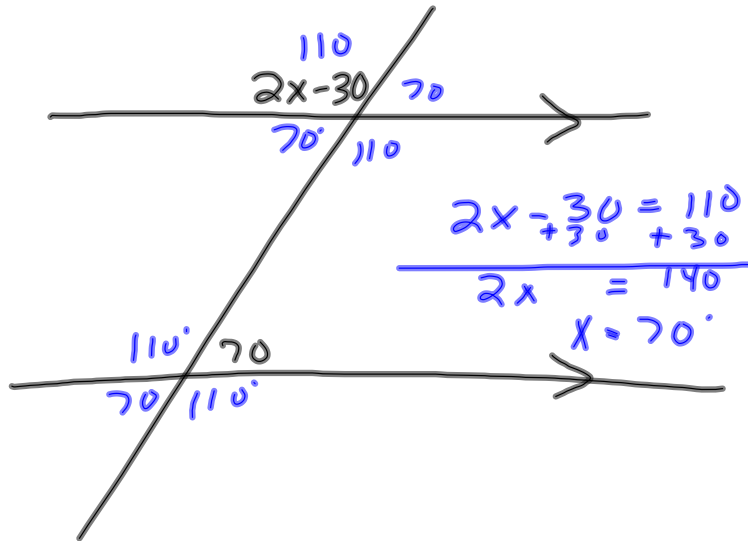


10-15-13
6th Geo



Naming - Oral





$y = 110$

$2x + 10 + 110 + x = 180$

$3x + 120 = 180$

$-120 \quad -120$

$3x = 60$

$x = 20$

