

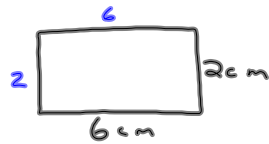
10-10-13

1st Geo

Ch. 2 Test tomorrow

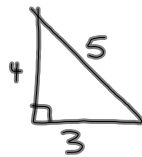
Practice

Area and Perimeter



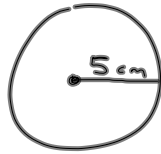
$$\text{Perimeter} = 6 + 2 + 6 + 2 = 16 \text{ cm}$$

$$\text{Area} = l \cdot w = 6 \cdot 2 = 12 \text{ cm}^2$$



$$\text{Perimeter} = 3 + 5 + 4 = 12 \text{ cm}$$

$$\text{Area} = \frac{1}{2}bh = \frac{1}{2} \cdot 3 \cdot 4 = 6 \text{ cm}^2$$



$$\text{Circumference} = \pi d = \pi \cdot 10 \approx 31.4 \text{ cm}$$

$$\text{Area} = \pi r^2 = \pi \cdot 5^2 = \pi \cdot 25 \approx 78.5 \text{ cm}^2$$

What is the area of a circle that has a diameter of 4 cm?

$$A = \pi r^2 = \pi \cdot 2^2$$

$$= 4\pi$$

$$\approx 12.6 \text{ cm}^2$$

$$\begin{array}{l} \uparrow \\ d = 4 \\ \therefore r = 2 \end{array}$$

Properties

- ① $AB=AB$ Reflexive
- ② If $XY-4=BC$,
then $XY=BC+4$ Addition
- ③ If $AB=6$ and
 $AB+BC=10$, then
 $6+BC=10$ Substitution
- ④ If $5 \cdot AB=BC$,
then $AB=\frac{BC}{5}$ Division

⑤ If $p \rightarrow r$ and $r \rightarrow n$, then
 $p \rightarrow n$.

⑥ "If you have a laptop, then you have a computer" is represented by $p \rightarrow q$.
What represents
"If you have a computer, then you don't have a laptop" ?
 $q \rightarrow \sim p$

Word	Symbol
AND	\wedge
OR	\vee
if and only if	\leftrightarrow

p : you are 10
 q : you like Twix
 n : you are a boy

"If you like Twix and you are a boy, then you are not 10."
 $q \wedge n \rightarrow \sim p$

How many sides do these have

- ⑧ Hexagon 6
- ⑨ Decagon 10
- ⑩ Nonagon 9
- ⑪ Pentagon 5
- ⑫ Heptagon 7

What is converse of

"if you are hungry, then your stomach grows."

If your stomach grows, then you are hungry.

Now give me the inverse

"If you are not hungry, then your stomach doesn't grow."

I have a total of 14 kids.
10 play soccer and 12 play tennis. How many play both? 8

