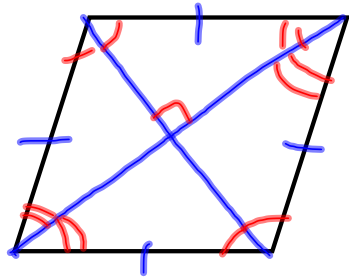


1-31-14

1<sup>st</sup> Geo

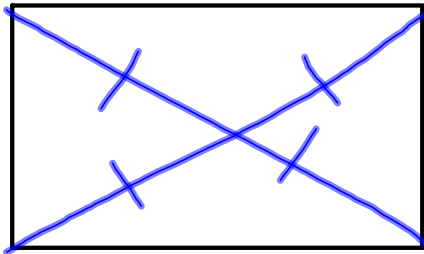
## Rhombus



① Diagonals cross  $\perp$

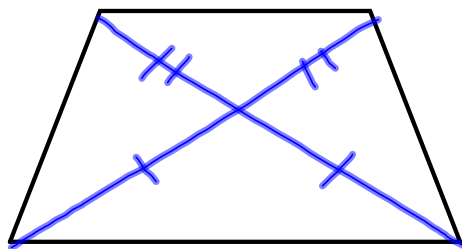
② Diagonals bisect  $\angle$ 's.

## Rectangle

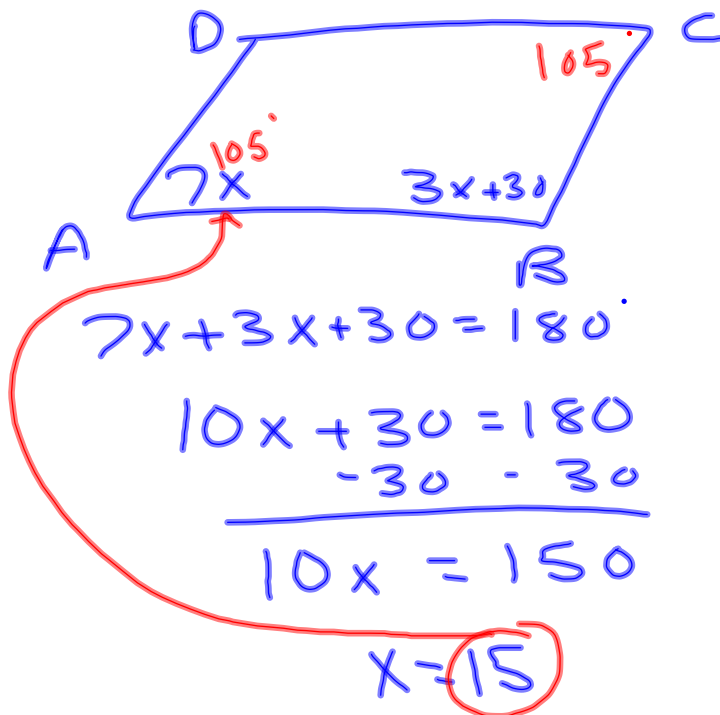


① Diagonals are = in length

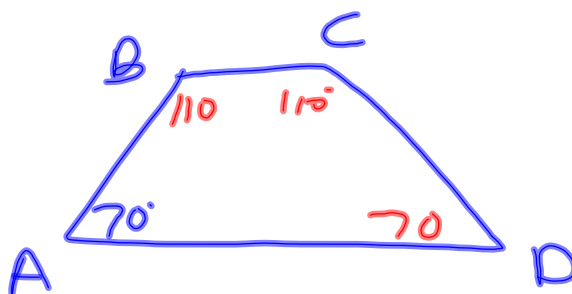
## Isosceles Trapezoid



- ① If ABCD is a parallelogram with  $\angle A = 7x$  and  $\angle B = 3x + 30$  what is  $\angle C$ ?



- ② If ABCD is an isosceles trapezoid with  $\angle A = 70^\circ$ . What is  $\angle C$ ?



③ In which polygon are diagonals always perpendicular?

Rhombus

In which of the following are opposite angles not congruent (equal):

A.) rhombus

B.) parallelogram

C.) trapezoid

D.) rectangle