

1-30-14  
1<sup>st</sup> Geo

## Ch. 6 Review

- ① How many degrees is the sum of the interior angles of a hexagon?

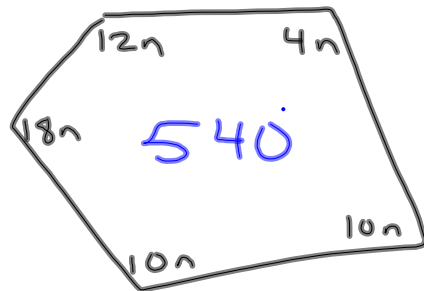
$$(n-2) \cdot 180^\circ$$

$$(6-2) \cdot 180^\circ$$

$$4 \cdot 180^\circ$$

$$720^\circ$$

- ② Find  $n$



$$(n-2) \cdot 180$$

$$(5-2) \cdot 180$$

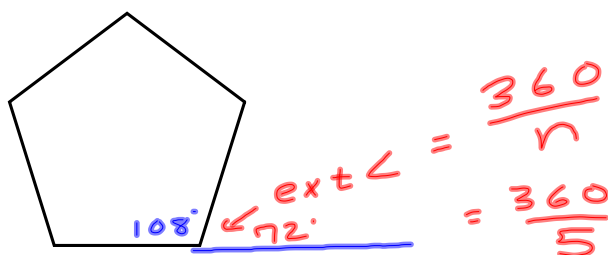
$$3 \cdot 180$$

$$540^\circ$$

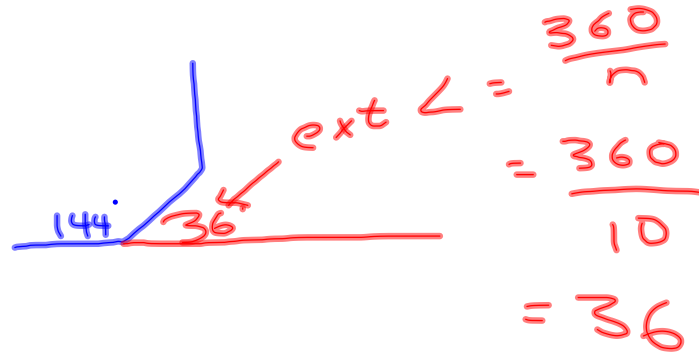
$$12n + 4n + 18n + 10n + 10n = 540$$

$$\frac{54n}{54} = \frac{540}{54}$$

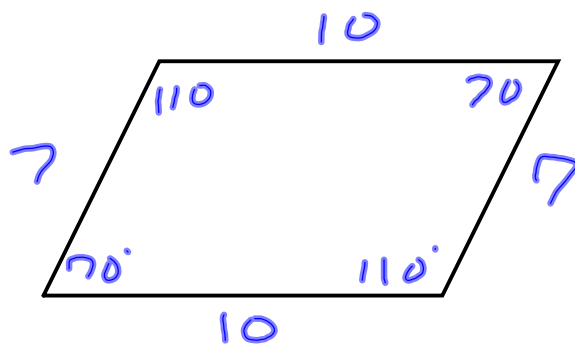
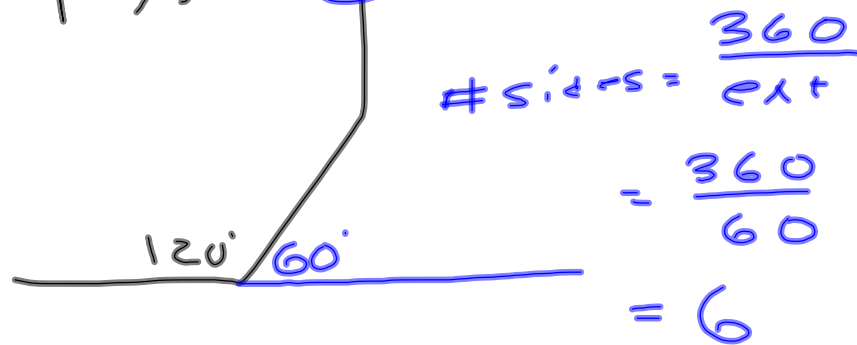
$$n = 10$$

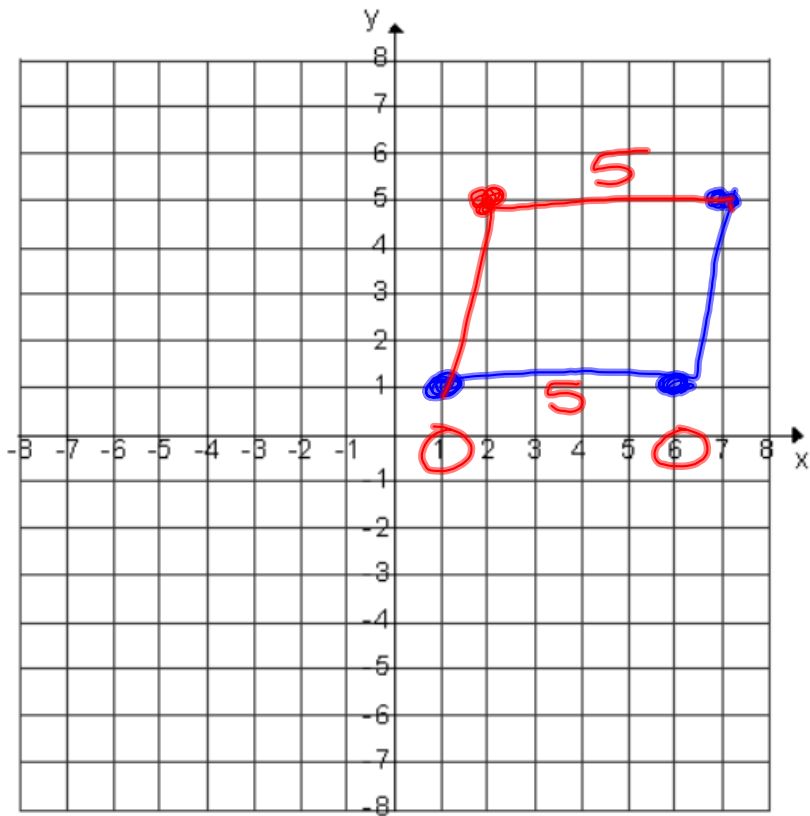


How many degrees is each interior angle of a decagon?  $144^\circ$



The measure of the interior angle of a regular polygon is  $120^\circ$ . How many sides is this polygon?  $6$





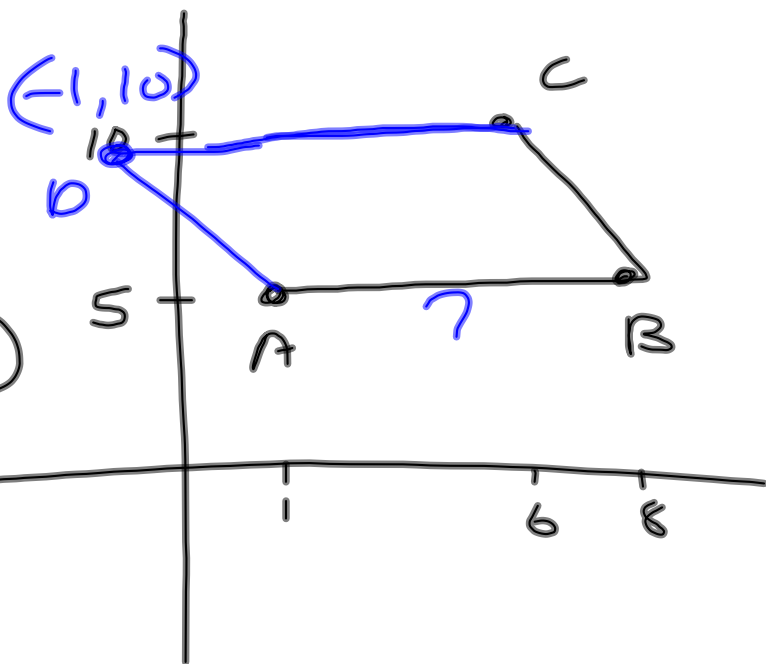
Find D in parallelogram

$ABCD$  if

$A = (1, 5)$

$B = (8, 5)$

$C = (6, 10)$



$(-1, 10)$