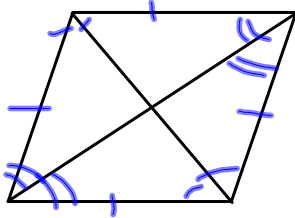


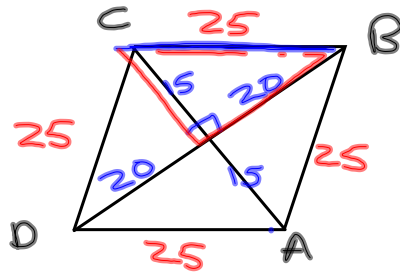
1-27-14
1st Geo

Rhombus



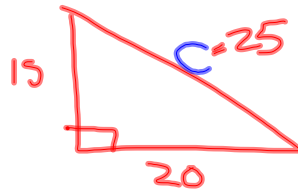
Special

- ① Diagonals bisect at 90°
- ② Angles are bisected



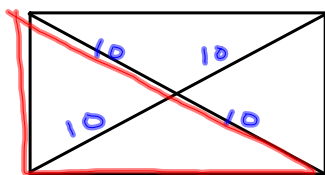
If $AC=30$ and $BD=40$,
What is perimeter of $ABCD$?

100



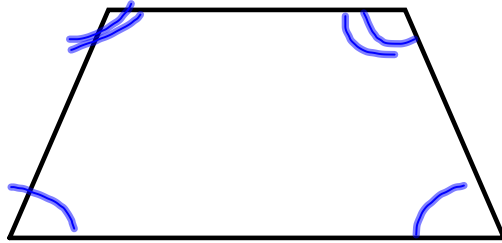
$$\begin{aligned} a^2 + b^2 &= c^2 \\ 15^2 + 20^2 &= c^2 \\ 225 + 400 &= c^2 \\ \sqrt{625} &= \sqrt{c^2} \\ c &= 25 \end{aligned}$$

Rectangle

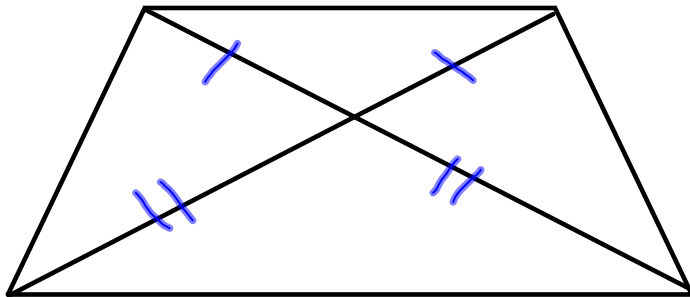


Diagonals are the same

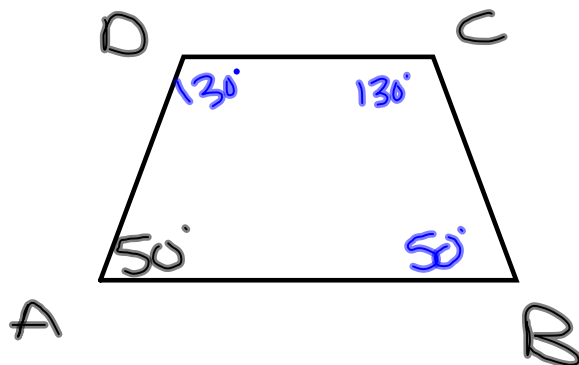
Isosceles Trapezoids

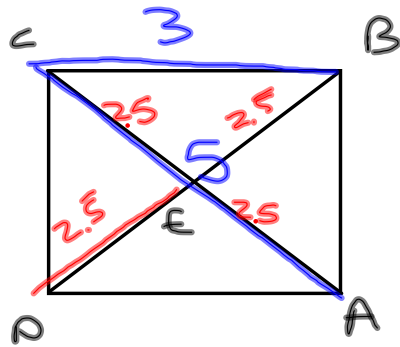


Base angles are =.



If $ABCD$ is an isosceles trapezoid with $\angle A = 50^\circ$, what is $\angle C$?





ABCD is a rectangle.
If $AC = 5$ cm and
 $BC = 3$ cm, what is DE ?
2.5

What type of quadrilateral always has diagonals that are perpendicular and bisect each other?

Rhombus
(square)

A rhombus is also a

- A.) square
- B.) parallelogram
- C.) rectangle
- D.) trapezoid

